

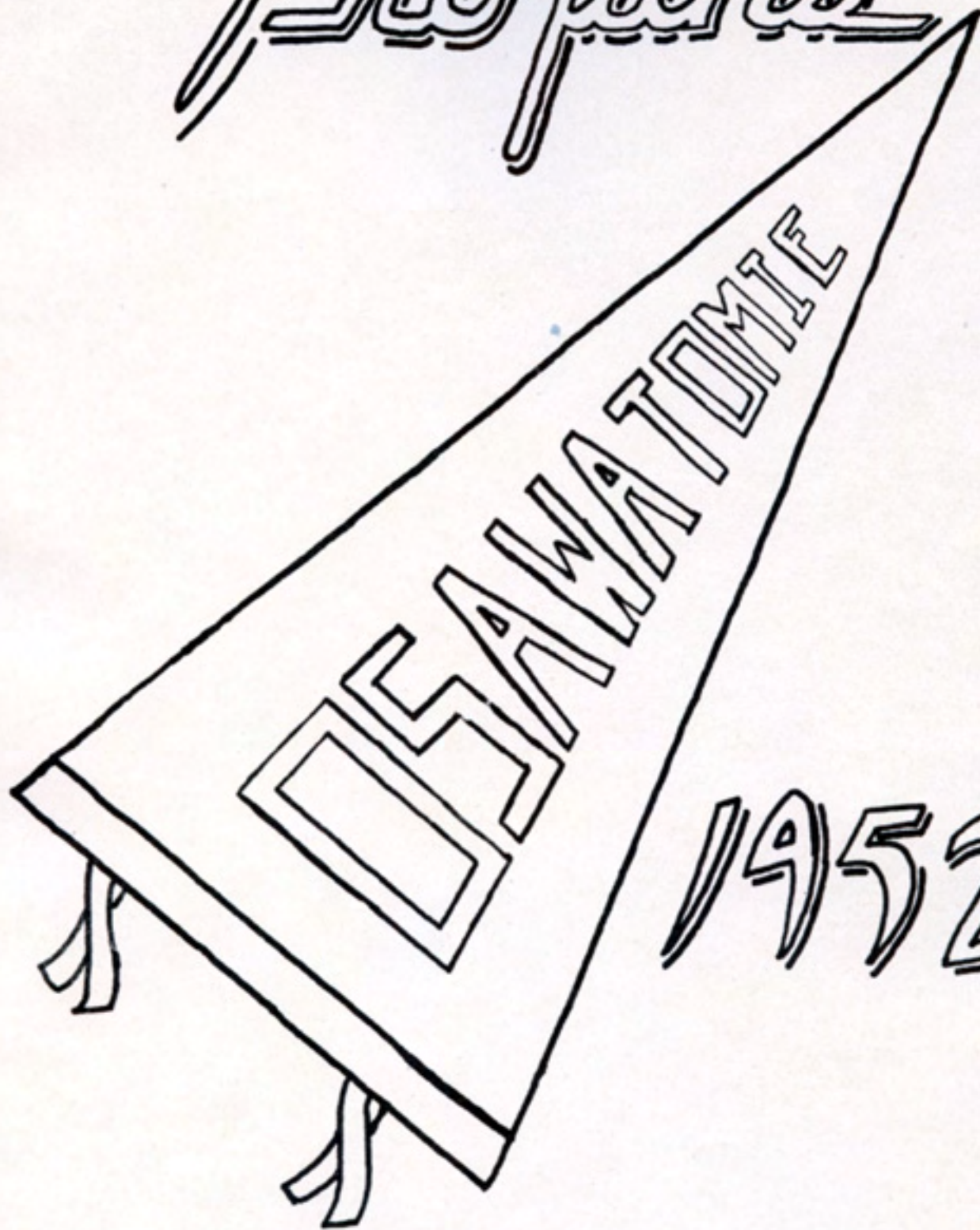
1952



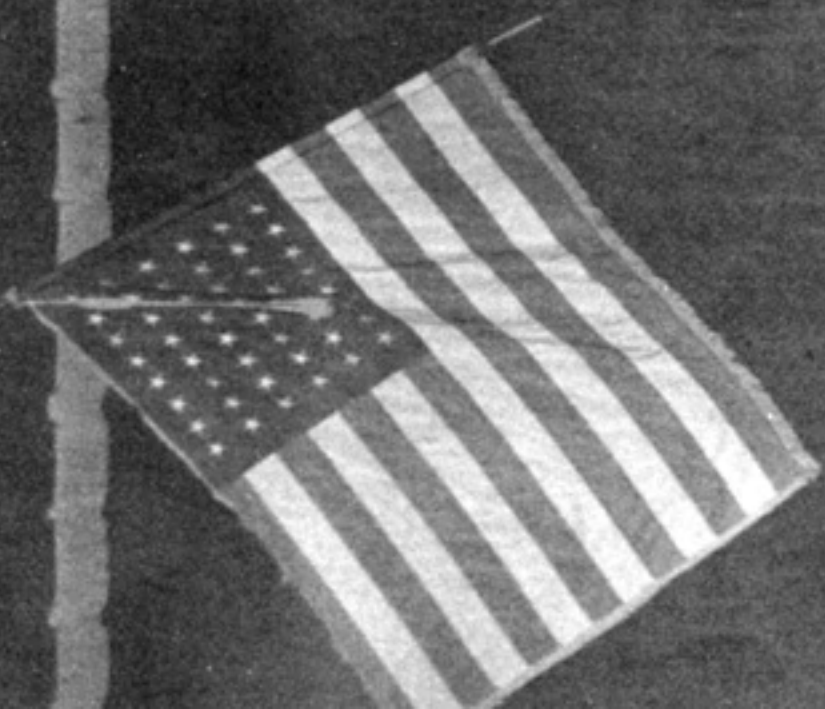
THE

Argonian

7 Hojiana



1952





ANNUAL STAFF



FIRST ROW, LEFT TO RIGHT: Doris Sechrest, Associate Editor; Susann Thompson, Associate Editor; LeEllen Weippert, Associate Editor. SECOND ROW, LEFT TO RIGHT: Eugene Weide, Junior Editor; Charles Hays, Junior Associate Editor; Richard Hawk, Editor.

MR. MINOR
Sponsor

FIRST ROW, LEFT TO RIGHT: Marilyn Shoemaker, Junior Artist; Marilyn Austin, Junior Artist; Verna Landers, Junior Artist; Vaughn Moore, Artist. SECOND ROW, LEFT TO RIGHT: James Bolen, Organization; Juanita Brown, Organization; Irene Durrant, Organization; Beverly Quincy, Junior Organization.



FIRST ROW, LEFT TO RIGHT: Kathleen Cortner, Business Manager; Jim Henderson, Junior Business Manager; Helen Butts, Associate Business Manager. SECOND ROW, LEFT TO RIGHT: Wesley Bartlett, Sports Editor; Lawrence Goudie, Sports Editor; Lyle Danielson, Associate Business Manager.



**ANNUAL
KING
AND
QUEEN**

**EVELYN HANEY
WESLEY BARTLETT**

ATTENDANTS



**SHIRLEY GOULD
CHARLES HAYS**







George Hunsperger

Ray Parker



Alfred Pepin

Bethel Perry



Charles Johnson

Robert Harmony

SCHOOL BOARD



JoAnn Young



G. A. YORK
Superintendent

Hail to our chief! The 1952 Annual Staff speaks for O. H. S. students and faculty in thus addressing our Superintendent George A. York, whose standard through the years has been "The school exists for the children it serves."



MR. EDWIN LYON
Principal

BEVERLY CONKLIN
Secretary



FACULTY



Hortence
Barr



Max Minor



J. Henry
Reb



Eleanor Vossler



Carolyn Mattingly



Fred McClanahan



William Cofer



Marguerite Peck

FACULTY



Deanna
McClure



S. M. Steele



Alice Clerico



Robert
Signor



Gilbert Boone



Patricia Lamb



Noel Ganoung



Raymon Renoe



SENIORS' BEST

Most Popular
Kathleen Cortner
Myron Rogers



Most Athletic
Helen Butts
Howard Goodey

Best Looking
Charlotte Maycumber
Bob Cresse

Most Studious
Wilma Gilchrist
Vaughn Moore

Most Dependable
Susann Thompson
Richard Hawk



S
E
N
I
O
R
S



BOB CRESSE President
 Football 1, 2, 3, 4; Basketball 1, 2, 3, 4; Track
 2, 3, 4; Kays 4; Boys' Glee Club 2, 3; Mixed
 Chorus 3; A cappella 4; Band 1, 2, 3; Swing
 Band 2, 3; Class Officer 4, President.



WESLEY BARTLETT Vice-President
 Football 1, 2, 3, 4; Basketball 1, 2, 3, 4; Track
 2, 3, 4; Kays 1, 4; Boys' Glee Club 2, 3; Class
 Officer 1, 4, Treasurer 1, Vice-President 4;
 Yearbook Staff-Positions Sports; Yearbook
 King.



JUANITA BROWN Secretary
 Kayettes 1, 2, 3, 4, Treasurer 3, Vice Pres-
 ident 4; Pep Club 1, 2, 3, 4, Vice-President
 3; Girls' Glee Club 2, 3, 4, Secretary-Treas-
 urer 4; Band 2, 3, 4, Treasurer 4; Junior Play;
 Class Officer 4, Secretary; Yearbook Staff-
 -Positions Organization.



PHYLLIS DAY Treasurer
 Girls' Glee Club 1, 2, 3; Class Officer, Treas-
 urer 1, 4.

1
9
5
2



BILL ANGEL

LEONA ARBUTHNOT

Kayettes 3, 4; Pep Club 3, 4; Cheerleader 4; Mixed Chorus 3; A cappella 4; Girls' Glee Club 3, 4; Junior Play; Sextette 3, 4; Transferred from Kansas City.

JERRY BALDWIN

DONNA BARDEN

Kayettes 1, 2, 3; Pep Club 2, 3.



LESLIE BARRETT

Freshmen Basketball; Basketball 1, 2; Kays 1, 2, 3; Board of Directors 2, 3; Student Council 3; Junior Play; Class Officer 1, 2, 3; Vice President 1, 2, 3.

MARY ALICE BARTLITT BULIS

Kayettes 1, 2; Pep Club 3, 4.



WANDA BLACKBURN

Kayettes 1, 4; Girls' Glee Club 1, 4.

JAMES BOLEN

Kays 4; Band 1, 2, 3, 4; Yearbook staff--Positions Organization.



BUD BUSSELL

Football 1, 2, 3, 4; Boys' Glee Club 2; Mixed Chorus 2.

HELEN BUTTS

Kayettes 1, 2, 3, 4; School Service 4; Pep Club 1, 2, 3, 4; President 4; Girls' Glee Club 1, 2, 3, 4; Junior Play, Assistant Director; Yearbook Staff, Assistant Business Manager.



RICHARD CASIDA

Football 1, 2, 3, 4; Basketball 2, 3, 4; Track 2, 3, 4; Kays 2, 3; Boys' Glee Club 2.

JOHN CASTLEBERRY

Kays 1; Boys' Glee Club 2.

SHIRLEY CLAWSON

Kayettes 1, 2, 3, 4; Pep Club 1, 2, 3, 4; A cappella 4; Girls' Glee Club 1, 2, 4; Band 1, 2, 3, 4.

KATHLEEN CORTNER

Kayettes 1, 2, 3, 4; Musician 3; Song-leader 4; Pep Club 1, 2, 3; Mixed Chorus 3; A cappella 4; Girls' Glee Club 3, 4; Band 1, 2, 3, 4; Junior Play; Yearbook Staff-Position Business Manager. Football Queen 1950; Girls' Sextette 3, 4; Girls' Quartet 3; Mixed Quartet 4.



LYLE DANIELSON

Kays 4; Band 4; Yearbook Staff-Position Asst. Business Mgr. Transferred from Clyde, Kansas.

GORDON DAVEY

Football 1, 2, 3, 4; Basketball 1, 2, 3, 4; Freshmen Basketball; Kays 1.



BILLY DONDNA

JOHNNY DOLLAR

Basketball 1; Kays 1, 2, 3, 4. Program Chairman 3, Secretary 4; Boys' Glee Club 3; Mixed Chorus 3; Band 1, 2, 3, 4. President 4; Swing Band 3; Junior Play.

ELAINE DURRANT

Kayettes 1, 2, 3, 4. Publicity 2, Point System 4; Pep Club 1, 2, 3, 4, Secretary 2, 3; Mixed Chorus 2; Girls' Glee Club 1, 2, 3; Band 1, 2, 3, 4.

IRENE DURRANT

Kayettes 1, 2, 3, 4. Community Service 2, Point System 3, Pianist 4; Pep Club 1, 2, 3; Mixed Chorus 2, 3, Pianist; A cappella 4. Pianist; Girls' Glee Club 1, 2, 3; Band 1, 2, 3, 4; Swing Band 3, 4; Yearbook Staff-Position Organization; Girls' Sextette 3, 4, Pianist; Mixed Quartet 4, Pianist.



LOREN EDWARDS

Kays 1, 2; Boys' Glee Club 1, 2, 3; Junior Play.

BETTY FEEBECK

Kayettes 3, 4; Pep Club 2; Girls' Glee Club 4.



RAYMOND FISHER

Basketball 3, 4; Track 3, 4; Kays 3, 4. Devotional Director 4; Transferred from Ottawa, Kansas.

BEVERLY FORD

Kayettes 4; Pep Club 4; A cappella 4; Girls' Glee Club 4; Band 4; Transferred from Metz, Missouri.



WILMA GILCHRIST

Kayettes 1, 2, 3, 4, Secretary 4; Pep Club 1, 2, 3, 4.

HOWARD GOODEYON

Football 1, 2, 3, 4; Basketball 1, 2, 3, 4; Track 1, 2, 3, 4; Kays 2, 4.



EVELYN HANEY

Kayettes 1, 2, 3, 4, Treasurer 2, Finance 3, 4; Pep Club 1, 2; Mixed Chorus 2; Girls' Glee Club 1, 2, 3, 4, President 4; Class Officer 1, 3, President 1, Secretary 3; Yearbook Queen.

RETA HANFELD

Kayettes 1, 2, 3, 4; Pep Club 1, 2; Girls' Glee Club 4.

LAWRENCE GOUDIE

Football 2, 3, 4; Basketball 2, 3, 4; Track 2, 3, 4; Kays 1, 4; Student Council 4; Boys' Glee Club 2, 3; A cappella 4; Yearbook Staff-Positions Sports Editor.

WILMA GRISBY

Kayettes 1, 3, 4; Pep Club 4.



RICHARD HAWK

Basketball 2; Kays 1, 2, 3, 4, President 3, 4; Student Council 1; Boys' Glee Club 2, 3; Mixed Chorus 2, 3; A cappella 4; Band 1, 2, 3, 4, Publicity 3; Swing Band 1, 2, 3, 4; Junior Play; National Honor Society 3, 4; Yearbook Staff--Positions Jr. Editor 3, Editor 4; Quartette 2, 3, 4; Freshman Basketball; Mixed Quartette 4.

DONA HAYES

Kayettes 1, 2, 3, 4; Pep Club 1, 2, 3, 4; Girls' Glee Club 1, 2.



ABRAHAM HAY
Kays 1.

JAMES HUNSPERGER
Football 1.

JANICE INSCORE
Kayettes 4; Pep Club 3, 4.

NORMA JOHNSON
Kayettes 1, 2, 3, 4; Secretary 3; Treasurer 4;
Pep Club 1, 2, 3, 4; President 3; Vice-Presi-
dent 4; Mixed Chorus 2; Girls' Glee Club 2,
3; Junior Play.



WILMA JOHNSON

SANDY JONES
Kays 4; Pep Club 4.



BUD KELLOGG
Kays 2; Basketball 2, 3, 4; Pep Club 1.

HERBERT LAW
Football 1, 3, 4; Basketball 1, 2, 3, 4; Fresh-
man Basketball; Track 2, 3, 4; Kays 1.



ELDON MC DOWELL
Junior Play; Stage Manager.

GERALD MC DOWELL
Kays 1, 2, 3, 4; Pep Club 1; Boys' Glee Club
2, 3.



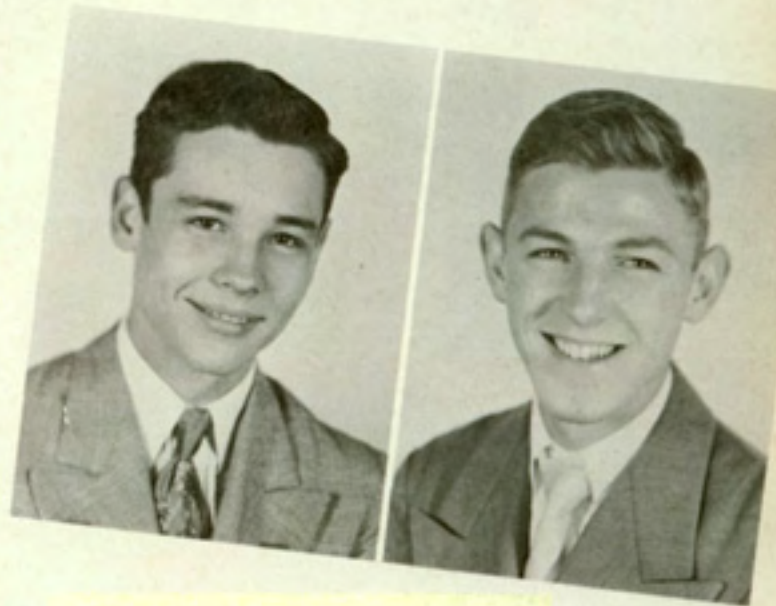
CHARLOTTE MAYCOMBER
Pep Club 1, 2; Mixed Chorus 2, 3; A cappella
4; Girls' Glee Club 1, 2, 3; Girls' Trio 2;
Girls' Quartet 3.

RUTH MILLER
Kayettes 3.



LE ROY MILLARD
Kays 4, 2; Board of Directors 2; Student
Council 2, 4; Treasurer 2; Vice President
4; Band 2; Junior Play.

VAUGHN MOORE
Football 2, 3, 4; Basketball 2, 3, 4; Track 2,
3, 4; Kays 1, 2, 3, 4; Parliamentary Law 4;
Boys' Glee Club 2, 3; Mixed Chorus 3, 2;
A cappella 4; Band 1, 2, 3, 4; Swing Band 3, 4;
National Honor Society 3, 4; Yearbook Staff-
Positions Artist; Boys' Quartette 3, 4.



LENORA MYERS
Kayettes 3, 4; Pep Club 3, 4; Mixed Chorus
3; A cappella 4; Girls' Glee Club 3, 4; Girls'
Quartet 3; Girls' Sextette 3; Transferred
from New Orleans.

KENNETH RAY
Kays 1, 2, 3, 4; Point System 1, 2; Boys' Glee
Club 1, 2, 3; Mixed Chorus 2; A cappella 4;
Junior Play.





MYRON ROGERS

Football 1, 2, 3, 4; Basketball 1, 2, 3, 4; Freshmen Basketball; Track 1, 2, 3, 4; Kays 1, 2, 3, 4; Vice-President 3, 4; Student Council 2, 3, 4; President 4; Class Officer President 2, 3.

DORIS SECHREST

Kayettes 1, 2, 3, 4; Program Chairman 3; President 4; Pep Club 1, 2, 3; Mixed Chorus 2, 3; A cappella 4; Girls' Glee Club 1, 2, 3, 4; Secretary 3; Pianist 3, 4; Junior Play; National Honor Society 3, 4; Yearbook Staff-Positions Co-Editor; Sextette 2, 3, 4; Boys' Quartet Pianist 3, 4; Mixed Quartet 4.

BENNIE SMITH

Football 3, 4; Track 2, 3, 4.

LEO SNYDER



FRANCIS STONE

Kays 1, 2; Pep Club 1.

PAT TENPENNY

Football 2, 3; Track 2; Kays 2, 4.



SUSANN THOMPSON

Kayettes 1, 2, 3, 4; Pep Club 1, 2, 4; Girls' Glee Club 1; Class Officer 1, 2, 3; Secretary 1, 2; Treasurer 3; Yearbook Staff-Positions Co-Editor.

CONNIE THOMS

Kayettes 1, 2, 3, 4; Pep Club 1, 2, 3, 4; Treasurer 4.





BARBARA TONCRAY
Kayettes 1; Pep Club 2, 4.



DOLORES WAGGONER
Kayettes 1, 2, 3, 4; Pep Club 1, 2, 3, 4; Girls' Glee Club 1, 2, 3, 4; Band 1, 2, 3, 4.



JOHN WEAVER
Football 1; Basketball 2, 3, 4;
Track 1, 3; Kays 2, 3, 4.



LeELLEN WEIPPERT
Kayettes 1, 2, 3, 4; Pep Club 4;
Mixed Chorus 3; A Cappella 4;
Girls' Glee Club 1, 2, 3, 4; Girls'
Sextette 3, 4; Yearbook Staff -
Position Co-Editor.

JUNIOR PLAY CAST 1950

SEATED, LEFT TO RIGHT: Leona Arbuthnot, Leslie Barrett, Kathleen Cortner, Juanita Brown, Kenneth Ray, LeRoy Millard, Bill Cofer-Director. STANDING, LEFT TO RIGHT: Eldon McDowell, John Dollar, Norma Johnson, Doris Sechrest, Helen Butts, Richard Hawk, Loren Edwards.



CLASS



OFFICERS

Orla Sitton
President

Joe Bachman
Vice-President

Ann McQuade
Secretary

Roger Gibson
Treasurer



Betty Adams

JUNIORS



Bill Coffelt



Alvin Arner
Maryln Austin

Larry Coker
Shirley Cook



Charlene Davis
Arthur Day



Charles Barker
Bill Boone

Elizabeth Dela Cruz
Pauline Dela Cruz



Wayne Brooks
Gene Carriker

Marion De Vore
Keith Goetz



Louis Carter
Barbara Caylor

Johnnie Gooden
Mary Ann Goss



Doris Chancellor
Charles Clearwater





Shirley Gould



Mildred Graves



Doris Green



Bob Haigh



Charles Hays



Jerry Kelley



Jim Henderson
Don Henson



Eleanor Krause
Loren Kuder



Ruby Hewitt
Clifford Hickman



Verna Landers
Janet Lloyd



Virgil Holloman
Hollis Hunt



Frances Lynn
LaVina Lyons



Patty Husted
Richard Hutchens



Judy McIntosh
Peggy McKenzie



Marjorie Johns
Jim Jordan





Billie Mitchell Charlotte Moore



Don Moor



Marilyn Shoemaker



Lloyd Obermeier
Leonard O'Brien

Stanley Slater
Bob Smith



Donna Storm
LaVerne Vaughn



Helen Oram
Robert Plaisted

Don Warrick
Bob Watson



Richard Pulliam
Beverly Quincy

Eugene Weide
Jerry Whetstone



Maxine Raymer
Lois Read

Fred Wicke
Ruth Wilson



Mary Jo Ricci
Billy Schuler



CLASS



Bill Stringham Gene Lewis Ronald McCutcheon Carol White

OFFICERS

SOPHOMORE



Betty Adams Doris Angel W. D. Barnes Rozella Bartlett Shirley Brooks
 Austin Donald Baker Loren Bartlett Edward Bradford Charles Brown
 Albery



Willard Glen Roy Carol James
 Bussard Chitwood Cockran Cragg De Vore
 Dorothy Donna Junior Edward Nona
 Castleberry Clary Conrad Cruely Dudley
 Naomi Jimmie Richard Byron Donna
 Fields Glenn Hadsal Harmony Hines
 Shirley Shirley Louis Rachel Mildred
 Gillenwater Goldsmith Haney Hawk Jarboe



CLASS 52



Edward
Jenkins

Joann
Johnson

Ted
Jones



Bennie
Kennedy
Robert
Kitchen

Roberta
Kitchen
Carol
McClanahan

Gerald
McCoach
Donald
McCutcheon

Patricia
McKinney
Ruth
Marcum

Betty
Miller
Jeanene
Miller



Alice
Moreland
Charles
Moore
Mary
Tarr
Paula
Taylor

Shirley
Sands
Ila
Sitton
Richard
Tenpenny
Anna
Tidwell

Jean
Slater
Carolee
Smothers
Keith
Weide
Kenneth
Weide

Robert
Spears
Albert
Stanley
Don
Wilson
Gail
Winter

Robert
Stout
Reita
Sullins
Judy
Zinn
Shirley
Kern



CLASS



Eldon Barrett President	Marie Ann Haigh Vice-President	Betty Brewer Secretary	Cecil Deel Treasurer
-------------------------------	--------------------------------------	------------------------------	----------------------------

OFFICERS

FRESHMAN



Gerald Austin Jo Ann Brooks	Elmer Bennett Bernice Byers	Shirley Blackman Beverly Casida	Deana Birchard Eugene Caylor	Donald Bratton Richard Chancellor
--------------------------------------	--------------------------------------	--	---------------------------------------	--



Bobby Clearwater Theodore Eubanks Mary Lou Goodeyon Beverly Gregg	Jeaneene Cortner Virginia Elkinton Dannie Goodwin Earl Guliford	Larry Crozier Norma Fletcher Roy Goss Eva Jean Harrell	Jeris Dial Larry Fultz Ernest Gould LaVelle Hays	Donald Downen Donald Gilchrist Anna Graves Kenneth Henson
--	--	---	---	--



CLASSES

52



Lorene Hickman	Shirley Hutchins	Jo Nelle Icenogle	Johanna Johnson
-------------------	---------------------	----------------------	--------------------

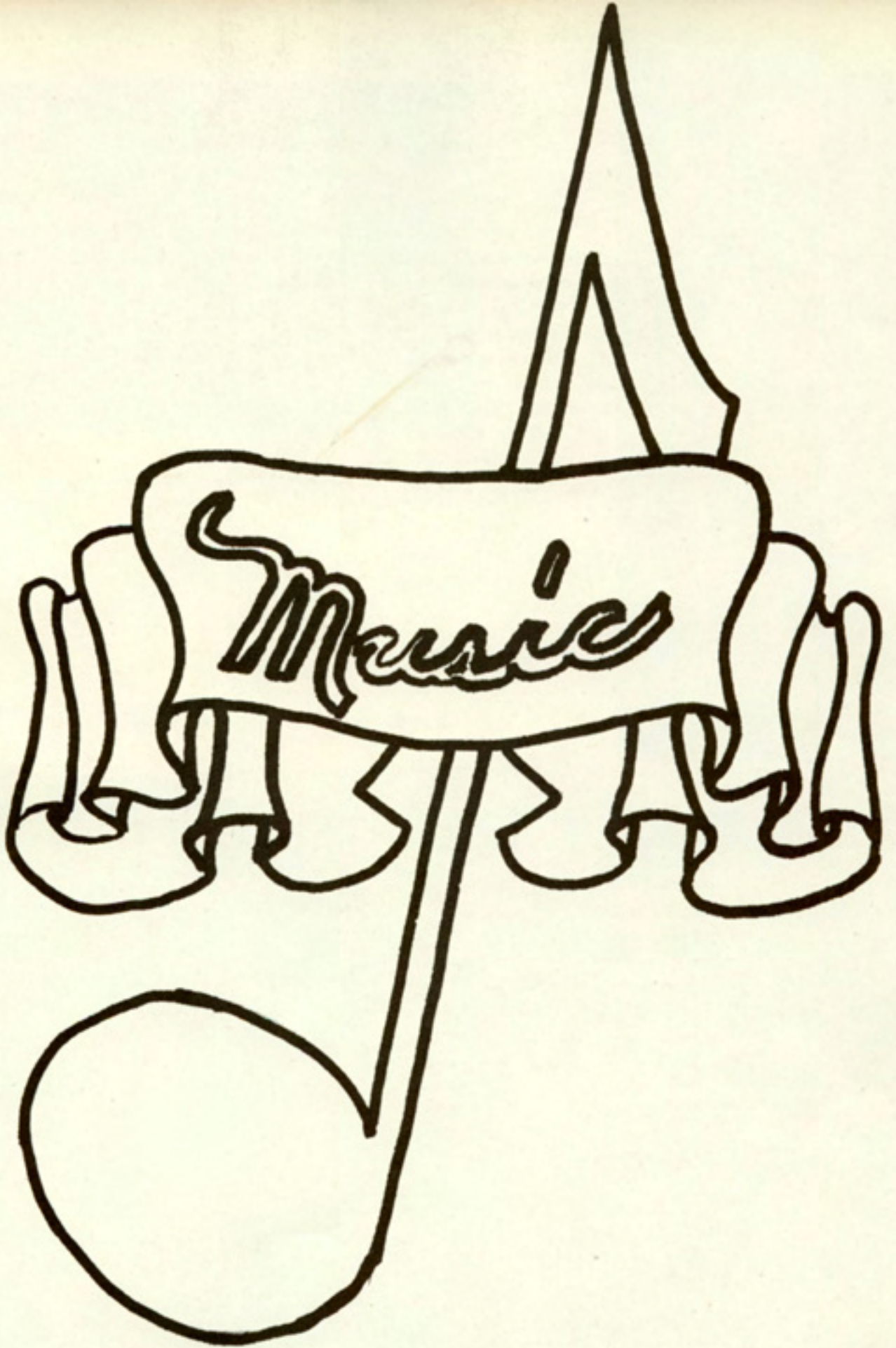


Lewis Johnson Charles Kellogg	Peter Johnson Novella Knisley	Roy Johnson Naomi Krause	Juanita Jolley Gene Law	Joyce Jones LaVern Lynn
--	--	-----------------------------------	----------------------------------	----------------------------------



Judith Matney Mary Ann Montague	Damon McDowell Shirley Parker	Milton McKenzie Raymond Pearce	Dana Meredith Margaret Rauhut	John Mooney Richard Ray	Charles Raymer Joe Vasquez	Carlos Robinson Merle Watson	Harold Robinson Barbara Webb	Dick Shores Edward West	Janet Stanley Joyce Yocum	LeRoy Turner Laura Young
--	--	---	--	----------------------------------	-------------------------------------	---------------------------------------	---------------------------------------	----------------------------------	------------------------------------	-----------------------------------





D
E
D
I
C
A
T
I
O
N

There are many high school bands and band directors, but the band and the director rated highly superior by the O. H. S. Senior Class of 1952 are The O. H. S. Band and Director Raymond Renoe. We are appreciative of their hours of practice, their out-of-town appearances as good will ambassadors of our school, and their assistance at both school and community activities. Therefore, this Annual of 1952 is respectfully dedicated to the O. H. S. Band and its capable director, Raymond Renoe.

Raymond Renoe





Band Officers--Juanita Brown, Treasurer, Larry Coker, Vice President, John Dollar, President.



Joann Johnson
Marjorette

O. H. S. Band at Kansas State Fair.





CLARINET QUARTETTE

LEFT TO RIGHT: John Dollar, Don McCutcheon, George York, Jerry Whetstone.



FLUTES

Marilyn Austin
 Marilyn Shoemaker (not pictured)
 Joann Johnson
 Marie Ann Haigh
 Carol McClanahan
 Alfred Barnes
 Beverly Ford
 OBOE
 Betty Brewer
 Shirley Clawson

CLARINET

John Dollar
 Don McCutcheon
 George York
 Jerry Whetstone
 Bill Boone (not pictured)
 Shirley Parker
 Peter Johnson

FRENCH HORNS

Joyce Nelemeyer
 Kathleen Cortner
 Margaret Rauhut
 Juanita Brown
 Byron Harmony
 Dona Clary
 Berniece Byers
 Eva Johnson
 Marjorie O'Brien
 Bob Smith
 Ralph Wilson
 Charlene Davis
 Larry Coker
 Irene Durrant
 Charles Brown
 Elaine Durrant
 Jim Bolen
 Richard Sullivan

BAND



BASSOON

Tom Walker

ALTO SAXOPHONE

Ronald McCutcheon

Jimmy Glenn

Iris Ogden

TENOR SAXOPHONE

Rachel Hawk

BARITONE SAXOPHONE

Paula Taylor

ALTO CLARINET

Shirley Gillenwater

BASS CLARINET

Bill Coffelt

Raymond Pearce

TROMBONE

Bob Haigh

LaVerne Vaughn

Richard McDowell

Douglas Winters

Glenn Chitwood

Dick Shores

BARITONE

Richard Hawk

Fred Wicke

Wanda Wicke

Vance Nash

CORONET

Shirley Cook

Vaughn Moore

Don Downen

Eugene Caylor

Lyle Danielson

Larry Fultz

Lowell Fairchild

Betty Duncan

Harold Smith (not pictured)

SOUSAPHONE

Milton McKenzie

Jerry Austin

Eugene Weide

Leon Sullins

DRUMS

Vincent Alexander

Betty Adams

Dolores Waggoner

Gail Winters

Eugene Cragg

BRASS SEXTETTE

LEFT TO RIGHT: Shirley Cook, Vaughn Moore, Milton McKenzie, Larry Coker, Richard Hawk, Robert Haigh.





FRONT ROW, LEFT TO RIGHT: Novella Knisley, Helen Butts, Doris Chancellor, Shirley Gould, Janet Lloyd, Beverly Quincy, Marie Ann Haigh, Jo Ann Brooks, Billie Jean Mitchell, Betty Brewer, Johanna Johnson, Margaret Rauhut, Beverly Casida, Carol Cragg, Jeaneene Cortner. SECOND ROW, LEFT TO RIGHT: Hazel Ann Martin, Frances Lynn, Helen Oram, Donna Clary, Donna Storm, Rachel Hawk, Verna Landers, Juanita Brown, Judy Zinn, Barbara Caylor, Shirley Gillenwater, Shirley Clawson, Joann Johnson, Mary Ann Goss, Kathleen Cortner, Shirley Sands, Reita Sullins, Betty Adams, Ruth Marcum, Juanita Jolley, Jeris Dial, Reta Hanfeld, Shirley Blackman, Shirley Hutchens, Wanda Blackburn, Charlotte Moore.

GLEE

Mr. Cofer, Director





FRONT ROW, LEFT TO RIGHT: Leona Arbuthnot, Dolores Waggoner, Marjorie Johns, Patty Husted, Phyllis Day, Carol White, Dana Meredith, Shirley Kern, Mary Rose McIntosh, Shirley Brooks, Charlene Davis, Deana Birchard. SECOND ROW, LEFT TO RIGHT: Ann McQuade, Nona Dudley, LeEllen Weippert, Doris Angel, Ila Sitton, Peggy McKenzie, Shirley Goldsmith, Patricia McKinney, Lenora Myers, Lois Reed, Rozella Bartlett, Betty Feebeck, Beverly Ford, Maxine Raymer, Jeris Dial, Anna Belle Graves.

CLUB

LEFT TO RIGHT: Janet Lloyd-Vice President, Evelyn Haney-President, Juanita Brown-Secretary-Treasurer.





LEFT TO RIGHT: Kathleen Cortner, Barbara Caylor, Le Ellen Weippert, Ann McQuade, Leona Arbuthnot, Doris Sechrest, Pianist, Irene Durrant.



LEFT TO RIGHT: Shirley Gould, Verna Landers, Judy Zinn, Rachel Hawk, Shirley Sands, Doris Angel, Pianist, Juanita Jolley.

A CAPPELLA CHOIR

LEFT TO RIGHT, FIRST ROW: Charles Brown, Stanley Slater, Glen Chitwood, Richard Pulliam, Loren Bartlett, Fred Wicke, Bob Cresse, Vaughn Moore. SECOND ROW: Kathleen Cortner, Barbara Caylor, Shirley Gould, Mary Ann Goss, Frances Lynn, Beverly Ford, Shirley Brewer, Verna Landers, Carol White, Juanita Jolley, Carol Cragg, Leona Arbuthnot, Marie Ann Haigh. THIRD ROW: Leonard Crozier, Jim Henderson, Robert Haigh, Irene Durrant, Shirley Gillenwater, Shirley Clawson, Hazel Martin, LeEllen Weippert, Lenora Myers, Charlotte Maycumber, Doris Sechrest, Rachel Hawk, Judy Zinn, Joann Johnson, Ann McQuade, Shirley Sands, Doris Angel, Kenneth Ray, Lawrence Goudie, Richard Hawk.





TRIPLE TRIO

LEFT TO RIGHT: Vema Landers, Kathleen Cortner, Beverly Ford, Jo Ann Brooks, Hazel Martin, Juanita Jolley, Doris Angel, Evelyn Haney, Leona Arbuthnot, Pianist, Nona Dudley.

MIXED QUARTETTE

LEFT TO RIGHT: Kathleen Cortner, Vaughn Moore, Doris Sechrest, Richard Hawk, Pianist, Irene Durrant.



BOYS' QUARTETTE

LEFT TO RIGHT: Jim Henderson, Vaughn Moore, Loren Bartlett, Richard Hawk, Pianist, Doris Sechrest.

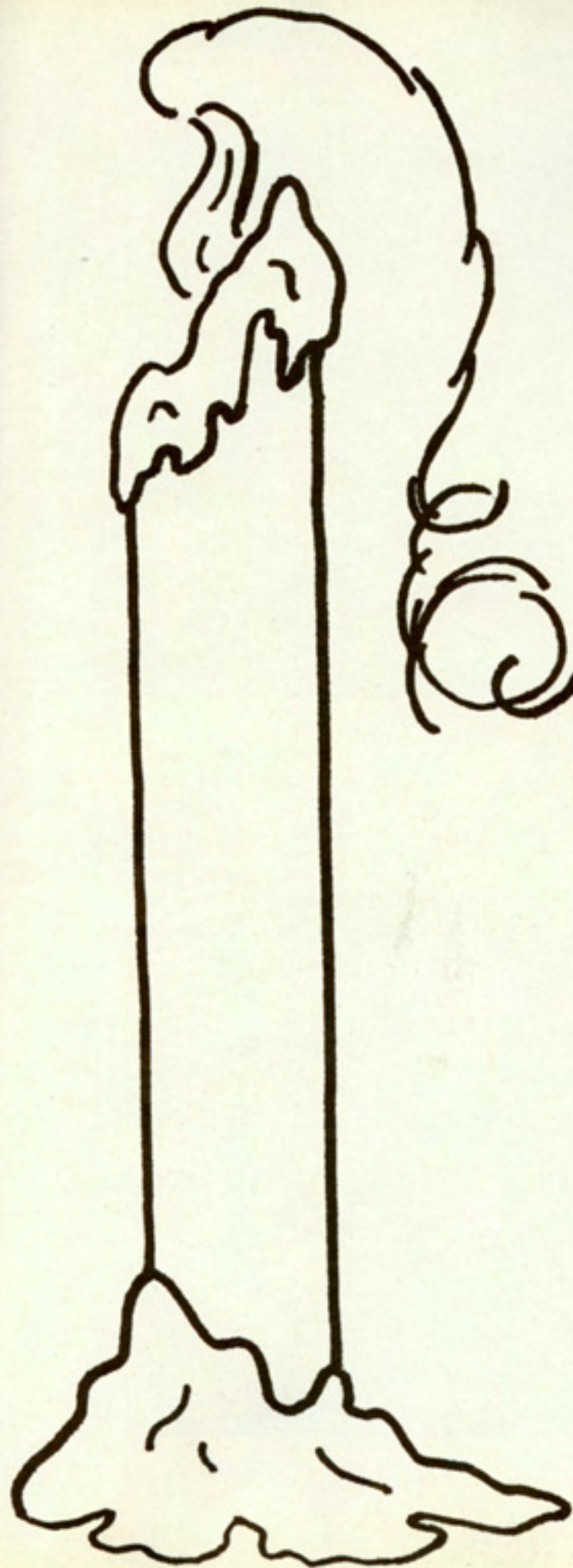




OUR NEW CITY HALL

Every city has a cherished vision of municipal, architectural beauty. Osawatomie's dream is completely realized in the new Municipal Auditorium, located on the southeast corner of Fifth and Main Streets.





Organizations

KAYETTES

SPONSORS

LEFT TO RIGHT: Miss Patricia Lamb, Mrs. Marguerite Peck, Miss Deana McClure.



Doris Sechrest
President



Juanita Brown
Vice-President



Wilma Gilchrist
Secretary



Norma Johnson
Treasurer



BOARD MEMBERS

LEFT TO RIGHT, SEATED: Shirley Gould, Barbara Caylor, Kathleen Cortner, Mary Ann Goss, Elaine Durrant, Helen Butts, Verna Landers. STANDING: Evelyn Haney, Beverly Quincy, Carol McClanahan, Irene Durrant.





LEFT TO RIGHT, FIRST ROW: Nona Dudley, Roberta Kitchen, Carol White, Laura Young, Marie Ann Haigh, Carol Cragg, Reita Sullins, Shirley Cook, Billie Jean Mitchell, Patricia Husted, Eva Jean Harrell, Joyce Yocum, Jeanene Cortner. SECOND ROW: Ila Sitton, Doris Angel, Mary Jo Ricci, Dona Hayes, Janice Inscore, Eleanor Krause, Ruth Marcum, Deana Birchard, Marilyn Shoemaker, Patricia McKinney, Alice Moreland. THIRD ROW: Carolee Smothers, Beverly Gregg, Ruth Wilson, Juanita Jolley, Elaine Elkinton, Mildred Jarboe, Jo Ann Brooks, Betty Adams, Beverly Ford, Jeris Dial, Reta Hanfeld, Joyce Jones.

LEFT TO RIGHT, FIRST ROW: Shirley Kern, Shirley Parker, Betty Brewer, Anna Belle Graves, Joann Johnson, Ann McQuade, Leona Arbuthnot, Jeanene Miller, Shirley Clawson, Shirley Gillenwater, Shirley Goldsmith, Lorene Hickman, Dana Meredith, Johanna Johnson, Beverly Casida. SECOND ROW: Hazel Martin, Peggy McKenzie, Doris Chancellor, Susann Thompson, Connie Thoms, LeEllen Weippert, Virginia Bixler, Judy Matney, Anna Tidwell, Shirley Blackman, Berniece Byers, Charlene Davis, Wanda Blackburn, Novella Kinsley, Judy McIntosh, Mary Lou Goodeyon, Jo Nelle Icenogle. THIRD ROW: Dolores Waggoner, Marjorie Johns, Frances Lynn, Donna Clary, Rachel Hawk, Donna Storm, Janet Lloyd, Judy Zinn, Wilma Grigsby, Betty Feebeck, Janet Stanley, Barbara Webb, Naomi Krause, Norma Fletcher, Margaret Rauhut.





RICHARD HAWK
President



MYRON ROGERS
Vice-President



JOHN DOLLAR
Secretary



LARRY COKER
Treasurer

KAY BOARD



STANDING, LEFT TO RIGHT: W. D. Barnes, Roger Gibson, LeRoy Millard, Don Moor, Jim Henderson.
SEATED, LEFT TO RIGHT: Robert Haigh, Raymond Fisher, Vaughn Moore, Eugene Weide.

SPONSORS



GILBERT BOONE



ROBERT SIGNOR



FIRST ROW, LEFT TO RIGHT: Willard Bussard, Wesley Bartlett, Charles Hays, Charles Brown, Bill Boone, Gerald McDowell, Jerry Baldwin, Byron Harmony, Keith Goetz, Jimmy Glenn. SECOND ROW, LEFT TO RIGHT: Milton McKenzie, James Bolen, Fred Wicke, Loren Bartlett, Richard Tenpenny, Bill Stringham, Don Wilson, Leonard O'Brien, Joe Bachman, Don Warrick. THIRD ROW: Kenneth Weide, Raymond Pearce, Gene Lewis, Lewis Carter, John Gooden, James DeVore, Glen Chitwood, Bob Smith, Billy Doudna.

KAYS

FIRST ROW, LEFT TO RIGHT: Kenneth Ray, Lyle Danielson, Lawrence Goudie, Charles Barker, John Weaver, Stanley Slater, Richard Pulliam, LaVern Vaughn, Robert Kitchen, Sandy Jones. SECOND ROW, LEFT TO RIGHT: Peter Johnson, LaVelle Hays, Roy Johnson, Dick Shores, Gerald Austin, Donald Bratton, Ernest Gould, George Stanley. THIRD ROW, LEFT TO RIGHT: Donald Gilchrist, Cecil Deel, Richard Ray, Donnie Downen, Eldon Barrett, Charles Raymer, Richard Chancellor, Larry Fultz, Donald Baker, John Mooney, Theodore Eubanks.



STUDENT COUNCIL



STANDING, LEFT TO RIGHT: Don Moor, Lawrence Goudie, Don McCutcheon, Larry Coker. SEATED, LEFT TO RIGHT: Ernest Gould, Carol McClanahan, LeRoy Millard, Myron Rogers, Beverly Casida, Shirley Gould.

OFFICERS

LEFT TO RIGHT: Larry Coker, Treasurer, LeRoy Millard-Vice-President, Myron Rogers-President, Shirley Gould-Secretary.



SPONSOR

MR. LYON-Sponsor



PEP CLUB



LEFT TO RIGHT, FIRST ROW: James Bolen, Rachel Hawk, Mary Ann Goss, Judy Zinn, Donna Storm, Beverly Quincy, Janet Lloyd, Delores Waggoner, Marjorie Johns, Frances Lynn, Helen Oram, Sandy Jones, Richard Hutchens. SECOND ROW: Juanita Brown, Doris Chancellor, Donna Clary, Naomi Fields, Dana Meredith, Betty Brewer, Janet Stanley, Shirley Parker, Laura Young, Billie Jean Mitchell, Patty Husted, Eva Jean Harrell, Joyce Yocum, Jeaneene Cortner. THIRD ROW: Lenora Myers, LeEllen Weippert, Susann Thompson, Wilma Gilchrist, Elaine Durrant, Peggy McKenzie, Barbara Webb, Jo Nelle Icenogle, Judy Matney, Mary Lou Goodeyon, Nona Dudley, Marilyn Austin, Rieta Sullins, Roberta Kitchen, Joann Johnson, Shirley Gillenwater, Shirley Clawson, Barbara Caylor, Shirley Blackman, Charlene Davis. FOURTH ROW: Norma Fletcher, Lorene Hickman, Elaine Elkinton, Hazel Martin, Shirley Hutchens, Jo Ann Brooks, Naomi Krause, Janet Inscore, Dona Hayes, LaVina Lyons, Maxine Raymer, Beverly Ford, Carol Cragg, Margaret Rauhut, Beverly Cassida, Betty Adams.

SPONSOR

MR. McCLANAHAN



FIRST ROW, LEFT TO RIGHT: Ann McQuade, News Reporter; Charles Hays, Secretary; Connie Thoms, Treasurer. SECOND ROW: Norma Johnson, Vice-President; Helen Butts, President.

OFFICERS



CHEERLEADERS



Marie Ann Haigh



Jeanene Miller

Verna Landers



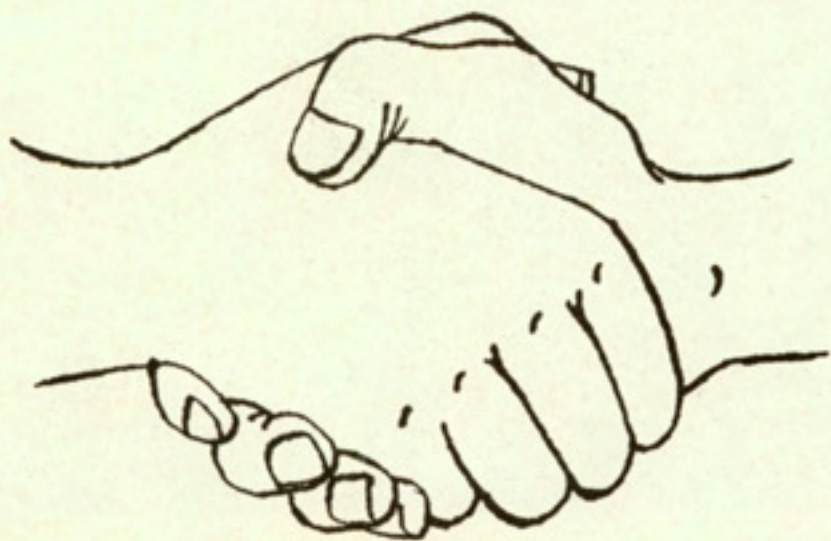
Shirley Gould



Leona Arbuthnot



Sports



FOOTBALL



FIRST TEAM

FIRST ROW, LEFT TO RIGHT: Gene Carriker, Richard Casida, Vaughn Moore, Joe Bachman, Lawrence Goudie, Charles Barker, Wesley Bartlett. SECOND ROW, LEFT TO RIGHT: Don Warrick, Bob Cresse, W. D. Barnes, Mike Rogers, Howard Goodeyon.

Coach--Mac Steele



SECOND TEAM

LEFT TO RIGHT, FIRST ROW: Bob Haigh, Lloyd Obermeier, Roger Gibson, Keith Goetz, Bud Bussell, Bill Boone, Jim Jordan. SECOND ROW, LEFT TO RIGHT: Bennie Smith, Gordon Davey, Don Moor, Bill Coffelt, Fred Wicke.

SQUAD



FRESHMEN TEAM

LEFT TO RIGHT, FIRST ROW: Larry Fultz, Dick Shores, Eugene Caylor, Gene Law, Larry Crozier, Milton McKenzie, Peter Johnson.



Active Co-Captains--Mike Rogers, Bob Creese



GREY SQUAD

LEFT TO RIGHT, FIRST ROW: John Mooney, Larry Fultz, Larry Crozier, Austin Alberty, Louis Johnson, Charles Moore, Gene Law. SECOND ROW: Charles Kellogg, Pete Johnson, Charles Brown, Edward West, Edward Cruey, Ronald McCutcheon, Donald McCutcheon, George Stanley. THIRD ROW: Donald Downen, Roy Johnson, Don Bratton, Eugene Caylor, Dick Shores, Willard Bussard, Milton McKenzie, Jimmy Glenn, Ernest Gould.



FRONT ROW, LEFT TO RIGHT: Bennie Smith, Howard Goodeyon, Bob Cresse, Mike Rogers, W. D. Barnes. SECOND ROW: Bud Bussell, Junior Conrad, Loren Bartlett, Gordon Davey, Keith Goetz, Fred Wicke, Gerald McCoach. THIRD ROW: Louis Haney, Don Moore, Roger Gibson, Bill Coffelt, Richard Tenpenny, Wesley Bartlett, Lawrence Goudie. TOP ROW: Edwin Lyon, Principal, Bob Haigh, Richard Casida, Joe Bachman, Don Warrick, Gene Carriker, Lloyd Obermeier, Charles Barker, Jim Jordan, Bill Boone, Vaughn Moore, MacSteele, Coach.

1952 BASKETBALL RECORD

Osawatomie. . . . 34	Olathe Mutes 0
Osawatomie. . . . 20	Ottawa 6
Osawatomie. . . . 7	St. Agnes 13
Osawatomie. . . . 44	Louisburg 0
Osawatomie. . . . 7	Olathe 0
Osawatomie. . . . 48	Bonner Springs 6
Osawatomie. . . . 6	Washington 6
Osawatomie. . . . 6	Rosedale 0
Osawatomie. . . . 7	Turner 7
Osawatomie. . . . 0	Paola 7



Jim Jordan



Myron Rogers



Wesley Bartlett



Herbert Law

1952
BASKETBALL
TEAM



Bob Cresse



Gene Carriker



Mr. Steele, Coach



Don Warrick

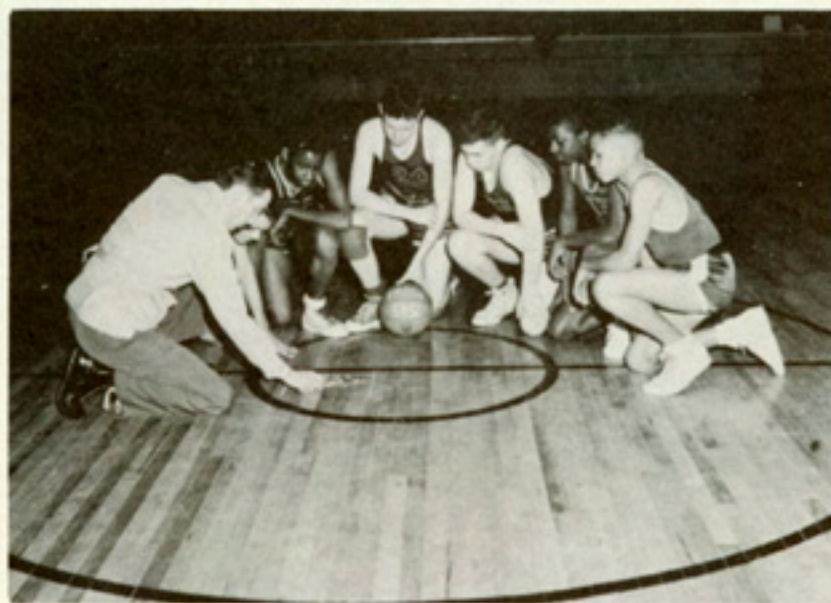


FRONT ROW, LEFT TO RIGHT: Larry Coker, Fred Wicke, Virgil Holloman, W. D. Barnes, Donald McCutcheon. SECOND ROW: Keith Goetz, Roger Gibson, Bill Coffelt, Jimmy Glenn, Ronald McCutcheon. THIRD ROW: Louis Haney, Vaughn Moore, Lawrence Goudie, Lloyd Obermier, Joe Bachman, Robert Haigh.



FRONT ROW, LEFT TO RIGHT: Kenneth Weide, Keith Weide. SECOND ROW: Jerry Whetstone, Raymond Fisher, Bill Schuler, Loren Bartlett, Don Wilson, Charles Brown, Bob Spears, Eugene Weide, George Stanley. THIRD ROW: Larry Coker, Fred Wicke, Keith Goetz, W. D. Barnes, Roger Gibson, Ronald McCutcheon, Herbert Law, Donald McCutcheon, Virgil Holloman. FOURTH ROW: Louis Haney, Vaughn Moore, Lawrence Goudie, Wesley Bartlett, Joe Bachman, Bob Haigh, Jim Glen, Bill Coffelt. TOP ROW: Lloyd Obermeier, Gene Carriker, Myron Rogers, Don Warrick, Bob Cresse, Richard Tenpenny, Junior Conrad.

FRESHMAN SQUAD



LEFT TO RIGHT: Mr. Signor, Coach, Danny Goodwin, Eddie West, Milton McKenzie, Dick Shores, Harold Robinson, Lewis Johnson.



LEFT TO RIGHT, FRONT ROW: Eddie West, Roy Johnson, Gene Law, Harold Robinson, Lewis Johnson. SECOND ROW: Milton McKenzie, Pete Johnson, Cecil Deel, Herbert Guliford, Richard Chancellor, Larry Fultz. THIRD ROW: Mr. Signor, Coach, Joe Vasquez, Charles Kellogg, Don Bratton, Ernest Gould, Dick Shores, Danny Goodwin, Larry Crozier, John Moony.



Queen, Juanita Brown



Attendant, Barbara Caylor

1952
CAGE
QUEEN



Attendant, Shirley Gillenwater



SNAPSHOTS





FIRST ROW, LEFT TO RIGHT: Richard McDowell, Vincent Alexander, Marjorie O'Brien, Lee Miller, Bessie Bolen, Martha Newlan, Harold Brim, Larry Hylton. SECOND ROW, LEFT TO RIGHT: Marilyn Magill, Claudia Provin, Carl Ray, Howard Barnes, Rita Spellman, Donna Wheeler, Betty Jo Duncan, Judy Zegler. THIRD ROW, LEFT TO RIGHT: Lowell Fairchild, Terry Hanlin, Larry Ganoung, Woody Connor, Stanford Arnold, James Allen, Donald Holloman, David Dickey, George York, Charles Thompson.

O. J. H. S. 8th GRADE

FIRST ROW, LEFT TO RIGHT: Sandra Buddenhagen, Marvin Brim, Barbara Long, Stanton Adams, Nancy Hamilton, Larry Icenogle, Vivian Devore, Laurine Pearce, Cecil Garaway, Lois Robertson. SECOND ROW, LEFT TO RIGHT: Jerry Coffelt, Charmaine Shell, Evelyn Smith, Mike Zakoura, Gary McKenzie, Tommy Walker, Jeanie Brooks, Mary Ellen Russell, Dorothy Root, Mary Lou Dancaster, Sarah DeVore. THIRD ROW, LEFT TO RIGHT: Adrian Richard, Karl Keast, Leonard Lynn, Jim McKeever, Davis Couture, Gary Burgoon, William Bolen, Lester Laas, Don Padgett, Ralph Wilson, Daryl Baker.



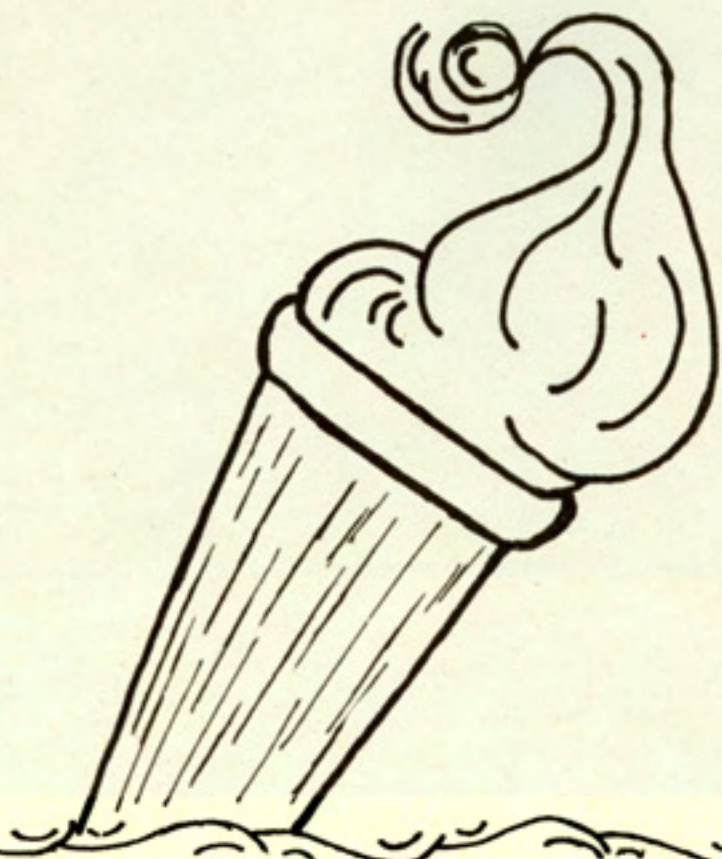


FIRST ROW, LEFT TO RIGHT: Irene Bolen, Evadna Van, Ina Miller, Darlene Cregg, Brenda Reppert, Carol Ann Deel, Eugene Cragg, Richard Lewis, Gary Read, Douglas Hollis, Tommy Witts. SECOND ROW: Jimmie Johns, Billy King, Richard McKinney, Eddie Elkinton, Eva Jean Johnson, Mac Steele, Sue Hagadorn, Carol Ann Austin, Ruthalee Newton, Billy Baker, Bob James. THIRD ROW: Clayton Fouts, Larry Butts, Margaret O'Brien, Sharon Loch, Barbara Dryden, Melba Pierce, Van Swanson, Carl Cruely, Carolyn McDowell, J. D. Goodwin.

O. J. H. S. 7th GRADE

FIRST ROW, LEFT TO RIGHT: Gene Ward, Austun Farley, Jerry Johnson, Levn Sullins, Wilma McDaniel, June Miller, Leah Adams, Larry Moor, Richard Sullivan, James Blankenship. SECOND ROW: Patricia Roethel, Marieta Ganoung, Paula Darst, Nina Miller, Carol Root, June Kolosik, Vance Nash, James Martin, Iris Ogden. THIRD ROW: Donald Floyd, Gary Hartley, Jim Waller, Peggy DeHart, Shirley Allicorn, Arthur Inscore, John Burch, Anna Belle West, Alice Turner, Wanda Wicke, Patricia Tyrell.





Once again now our school mates assemble
With fame we lift our hearts in song
To our high school our dear Alma Mater
Let gladness the moments prolong
We are proud of our lads and our lasses
Of honors won in days gone by
So here's a cheer for our old high school
For our old high, our dear old high.

Here's to our classes; Here's to our lasses;
Here's to the lads they adore
Here's to the seniors so mighty; Juniors so flighty
Freshies and Sophomores
Let mirth and gladness banish all sadness
And as the days go by you'll find us ready
And steady boosting for our Old High.