



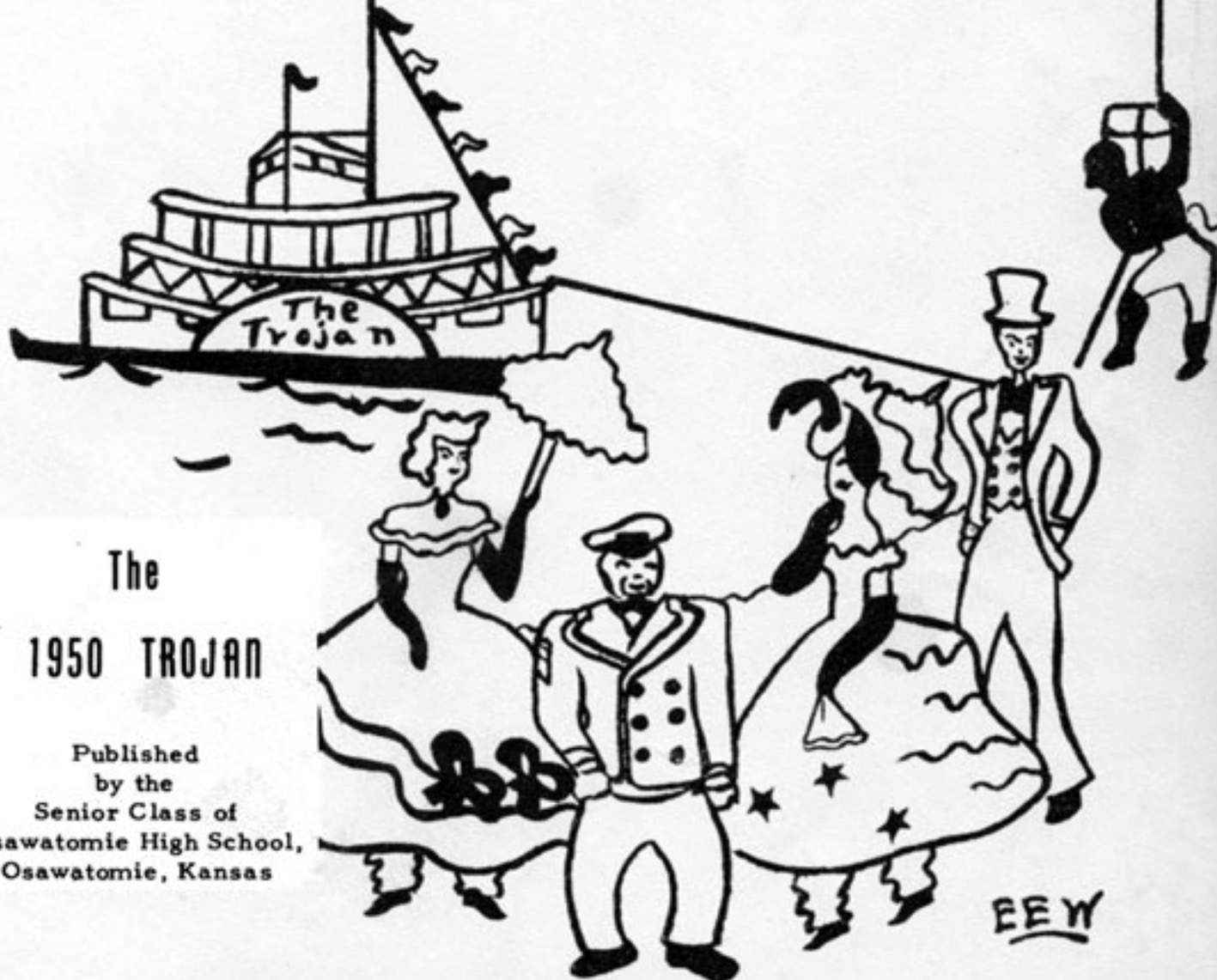
THE

Trojan

SHOWBOAT

PROGRAM

Management . Administration
Producers . . . Trojan Staff
Cast Classes
Scenes Activities



The
1950 TROJAN

Published
by the
Senior Class of
Osawatomie High School,
Osawatomie, Kansas

EEW



FOREWORD

The members of the 1950 Trojan Staff wish to express their appreciation to the faculty and students for their support and cooperation in helping make this annual possible.

We hope our annual will help each of you relive the parties, games, and hard work that have made up this year of 1949-1950.

DEDICATION

As the school year comes to an end, we, the Seniors of 1950, realize that our dreams and plans for the future are just beginning. We have been looking forward to this time for many years; but now as we take a glance back through our four years, we find that we have many cherished high school memories. Because of our desire to share these memories we dedicate Showboat of 1950 to the O.H.S. student body.



THE MANAGEMENT



Superintendent George A. York



Alfred Pepin



George Hunsperger



Ray Parker



Willis Birchard



Charles Johnson, M.D.



Robert Harmony



Jo Ann Young, Secretary



Doris Hanfeld, Secretary



Principal Frank A. Stocking



DIRECTORS



Eleanor Vossler
English



Deana McClure
English



Hortense Barr
Languages



Marguerite Peck
Librarian

Robert M. Signor
Physical Education



S.M. Steele
Math. & Athletics



Gilbert Boone
Commerce



Carolyn Mattingly
Commerce



DIRECTORS



Fred McClanahan
History



Edwin Lyon
Social Science



Noel Ganoung
Industrial Arts



J. Henry Reb
Science

R. G. Renoe
Instrumental Music



William Cofer
Vocal Music



Alice Clerico
Home Economics



Patricia Lamb
Physical Education





STUDENT COUNCIL



STANDING, LEFT TO RIGHT: LARRY COKER, MYRON ROGERS, DONALD MOOR, WILMA BIRCHARD, WILMA BUSSELL, BILL EDDY. SEATED, LEFT TO RIGHT: BERNARD CORTNER, TREASURER; NANCY COWDEN, PRESIDENT; PAT HOPE, SECRETARY; MILTON SKEENS, VICE PRESIDENT.

ASSISTANT DIRECTORS

STUDENT COUNCIL

Nancy Cowden

President

Frank A. Stocking

Sponsor





PRODUCERS

TROJAN STAFF

LEFT TO RIGHT: EDITH WOOLS, ASSOCIATE EDITOR AND ASSISTANT ARTIST; BEVERLY MAGILL, ASSOCIATE EDITOR; WAYNE WAGERS, EDITOR; JOAN COOK, ANNA FAYE SHOFNER, BETTY CAMPBELL, ORGANIZATIONS EDITORS; GENEVA LYKINS, ARTIST.

CLOCKWISE FROM TOP: JIM PARKER, SPORTS EDITOR; RAYMOND BORDEN, RUBY AYRES, JOE WARD, BUSINESS MANAGERS; JIM YORK, SPORTS EDITOR. CENTER PICTURE: BILL EDDY, SPORTS EDITOR. NOT PICTURED: MISS CAROLYN MATTINGLY, SPONSOR.





FEW

MOST POPULAR BOY AND GIRL

Pat Hope
Sophomore

Milton Skeens
Senior



CAST

THE CLASSES



G.P.L.



SENIOR OFFICERS

JIM YORK, PRESIDENT

STUDENT COUNCIL 3; CLASS PRESIDENT 1,4; NATIONAL HONOR SOCIETY 3; KAYS 1,2,3,4; KAY MUSIC AND PIANO DIRECTOR 4; BASKETBALL 3; FOOTBALL 3,4; BAND 1,2,3,4; ANNUAL STAFF-SPORTS EDITOR; JUNIOR PLAY; BOYS' GLEE CLUB 4; MIXED CHORUS 4.

ELEANOR HAIGH, VICE-PRESIDENT

CLASS VICE-PRESIDENT 4; KAYETTES 1,2,3,4; KAYETTE PIANIST 3,4; BAND 1,2,3,4; JUNIOR PLAY; PEP CLUB 1,2,3,4; GIRLS' GLEE CLUB 1,3,4; MIXED CHORUS 4; GIRLS' ENSEMBLE 4.

ANNA LEE PRICE, SECRETARY

CLASS SECRETARY 3,4; NATIONAL HONOR SOCIETY 3; KAYETTES 1,2,3,4; KAYETTE MEMBERSHIP COMMITTEE 2, VICE-PRESIDENT 3; KAYETTE PROGRAM DIRECTOR 4; BAND 1,2,3,4; JUNIOR PLAY; PEP CLUB 1,2,3,4; GIRLS' GLEE CLUB 1,3,4; GIRLS' ENSEMBLE 4; MIXED CHORUS 4.

DOROTHEA CLIFT, TREASURER

STUDENT COUNCIL 3, STUDENT COUNCIL VICE-PRESIDENT 3; CLASS TREASURER 4; KAYETTES 1,2,3,4; KAYETTE POINT SYSTEM 3; KAYETTE RECREATION 4; BAND 2,3,4; BAND NEWS CORRESPONDENT 4; PEP CLUB 1,2,3; GIRLS' GLEE CLUB 1.





MARIETTA HANEY

KAYETTES 1,2; PEP CLUB 1,2; GIRLS' GLEE CLUB 1; TRANSFERRED FROM BEELER RURAL HIGH SCHOOL, BEELER, KANSAS.

FRANK JOHNSON

BASKETBALL 3,4; FOOTBALL 1,2,3,4; BOYS' GLEE CLUB 1; TRANSFERRED FROM WELLSVILLE HIGH SCHOOL, WELLSVILLE, KANSAS.



DELORES HEAD

EDDIE KELLOGG

KAYS 2,3,4; BASKETBALL 2,3,4; FOOTBALL 1,3,4.

ELEANDR HICKMAN

KAYETTES 1,2; PEP CLUB 1,2,3; GIRLS' GLEE CLUB 1,2,3,4; MIXED CHORUS 4.

JIM McCUTCHEON

KAYS 1,2,3,4; KAY VICE-PRESIDENT 3,4; BASKETBALL 3,4; FOOTBALL 1,3,4; BAND 1,2,3,4; BOYS' GLEE CLUB 4; MIXED CHORUS 4.



SHIRLEY JOHNSON

EUGENE O'BRIEN

KAYS 1,2,3; BASKETBALL 1,2,3,4; FOOTBALL 1,2,3,4.



BENNIE DUNHAM

KAYETTES 1,2,3,4; PEP CLUB 1,2,3,4; TRANSFERRED FROM PENSACOLA HIGH SCHOOL, PENSACOLA, FLORIDA; CHEERLEADER 2; BAND 1,2; GLEE CLUB 1, 2; GIRLS' ATHLETIC ASSOCIATION 1,4; HONOR ROLL 1,2.

CLARENCE GRAVES

KAYS 3,4; BOYS' GLEE CLUB 4.

THELMA ELKINTON

KAYETTES 1,2.

GEORGE HAY

KAYS 4; BOYS' GLEE CLUB 4.



MARY ANNE EVERETT

KAYETTES 1,2,3,4; BAND 1,2,3,4; JUNIOR PLAY; PEP CLUB 1,2,3,4; GIRLS' GLEE CLUB 3,4; MIXED CHORUS 4.

GENE HAYDEN

KAYS 2,3,4; KAY TREASURER 3; BASKETBALL 1, 2,3,4; FOOTBALL 1,2,3,4; BAND 1,2,3,4; BOYS' GLEE CLUB 1,4; MIXED CHORUS 1,4; BOYS' ENSEMBLE 4; TRANSFERRED FROM COFFEYVILLE HIGH SCHOOL, COFFEYVILLE, KANSAS.



MARY EVINGER

KAYETTES 1,2,4; PEP CLUB 3.

JOE JIMENEZ

BOYS' GLEE CLUB 4.



BETTY JO CASE

STUDENT COUNCIL 1; KAYETTES 1,2,4; BAND 1, 2,3; PEP CLUB 1,2,3.

BOB CAREY

KAYS 1,2,3,4; KAY PARLIMENTARY LAW 4; FOOTBALL 2,3,4; BAND 1,2,3,4; JUNIOR PLAY; BOYS' GLEE CLUB 4; MIXED CHORUS 4.



JOAN COOK

KAYETTES 1,2,3,4; KAYETTE PUBLICITY 3; POINT SYSTEM 4; BAND 1,2,3,4; ANNUAL STAFF-ORGANIZATION; JUNIOR PLAY; PEP CLUB 1,2,3,4; GIRLS' GLEE CLUB 1,3,4; MIXED CHORUS 4.

DUANE COOK

KAYS 3; BASKETBALL 1,2,3,4; FOOTBALL 1,2,3, 4; BAND 1,2,3,4.

RITA CORTNER

KAYETTES 1,2,3,4; KAYETTE MEMBERSHIP COMMITTEE 2; MUSIC DIRECTOR 3,4; BAND 1,2,3,4; JUNIOR PLAY; PEP CLUB 1,2,3,4; PEP CLUB TREASURER 2,4; GIRLS' GLEE CLUB 1,3,4; MIXED CHORUS 4; GIRLS' ENSEMBLE 3,4.

BILL EDDY

STUDENT COUNCIL 4; CLASS VICE-PRESIDENT 1, 3; KAYS 1,2,3,4; KAY PRESIDENT 4; BASKETBALL 1,2,3,4; FOOTBALL 1,2,3,4; BAND 1,2,3,4; BAND PRESIDENT 4; ANNUAL STAFF-SPORTS EDITOR; BOYS' GLEE CLUB 4; MIXED CHORUS 4; BOYS' ENSEMBLE.



NANCY COWDEN

STUDENT COUNCIL 2,4; STUDENT COUNCIL PRESIDENT 4; KAYETTES 2,4; KAYETTE PARLIMENTARY LAW 4; CLASS SECRETARY 1; PEP CLUB 2.

JAMES GILCHRIST

KAYS 2,3,4; FOOTBALL 1,2; PEP CLUB 3; BOYS' GLEE CLUB 4; MIXED CHORUS 4.



THE STARS

SENIORS

RUBY AYERS

CLASS SECRETARY-TREASURER 2; KAYETTES 1;
ANNUAL STAFF-BUSINESS MANAGER.

DONALD BEETS

KAYS 1,2,3,4; KAY TREASURER 4; BOYS' GLEE
CLUB 4; MIXED CHORUS 4.

DORIS BRATTON

CLASS TREASURER 3; KAYETTES 1,2,3,4; PEP
CLUB 1,2,3,4.

JOHNNIE BILLAM

KAYS 1,2,3; BASKETBALL 1,2,3,4; FOOTBALL 1,
2,3,4; JUNIOR PLAY; PEP CLUB 3; BOYS; GLEE CLUB
4.



BETTY CAMPBELL

STUDENT COUNCIL 2; CLASS TREASURER 1; KAY-
ETTES 1,2,3,4; KAYETTE DEVOTIONS 3, PRESIDENT
4; ANNUAL STAFF-ORGANIZATION; JUNIOR PLAY; PEP
CLUB 1,2,3,4; GIRLS' GLEE CLUB 1.

JAMES BLACKBURN

BASKETBALL 1; FOOTBALL 1,2,3,4; KAYS 4; BOYS'
GLEE CLUB 1.



JOYCE CARMICHAEL

KAYETTES 1,2,3,4; BAND 1,2,3; PEP CLUB 1,2,
3,4; GIRLS' GLEE CLUB 1,2.

RAYMOND BORDEN

STUDENT COUNCIL 2,3; KAYS 1,2,3,4; KAY PRO-
GRAM DIRECTOR 4; BASKETBALL 1,2,3,4; FOOTBALL
1,2,3,4; BAND 1,2,3,4; BAND TREASURER 3, VICE-
PRESIDENT 4; ANNUAL STAFF-BUSINESS MANAGER;
JUNIOR PLAY; BOYS' GLEE CLUB 4.

GENEVA LYKINS

SPRING QUEEN 1; KAYETTES 1,2,3,4; CHEERLEADER 4; ANNUAL STAFF-ART EDITOR; PEP CLUB 1, 2,3,4; TRANSFERRED FROM GLASGOW HIGH SCHOOL, GLASGOW, KENTUCKY

JIM PARKER

KAYS 2,4; BASKETBALL 2; FOOTBALL 2,3; ANNUAL STAFF-SPORTS EDITOR.



BEVERLY MAGILL

FOOTBALL QUEEN 3; CHEERLEADER 4; KAYETTES 1,2,3,4; ANNUAL STAFF-ASSOCIATE EDITOR; PEP CLUB 1,2,3,4; GIRLS' GLEE CLUB 1,2,3; TRANSFERRED FROM HOISINGTON HIGH SCHOOL, HOISINGTON, KANSAS; HOMEROOM PRESIDENT 1,2; GIRLS' ATHLETIC ASSOCIATION 1,2; GIRLS' USHER CLUB 1,2; Y-TEEN PIANIST 3; ATHLETIC ASSOCIATION BOOKKEEPER 2.

BROOKS PHILLIPS

KAYS 2,3,4; BOYS' GLEE CLUB 4; MIXED CHORUS 4.



BARBARA MULLINS

ATTENDANT TO FOOTBALL QUEEN 3; CHEERLEADER 2,4; KAYETTES 1,2,3,4; PEP CLUB 1,2,3,4; PEP CLUB PRESIDENT 3; GIRLS' GLEE CLUB 1.

HERBERT ROBINSON

KAYS 4; BOYS' GLEE CLUB 4; MIXED CHORUS 4; PEP CLUB 3.



JO NASH

KAYETTES 1,2,4; PEP CLUB 1,2,3,4; PEP CLUB VICE-PRESIDENT 4.

CHARLES SCHULER

CLASS PRESIDENT 2; KAYS 1,2,3,4; BASKETBALL 1,2,3,4; FOOTBALL 1,2,3,4; JUNIOR PLAY.



JOY RAY

MILTON SKEENS

STUDENT COUNCIL 4; CLASS PRESIDENT 3; KAYS 1,2,3,4; BASKETBALL 1,2,3,4; FOOTBALL 1,2,3,4.



ETHEL ROBERTSON
PEP CLUB 3.

GARRY STEVENSON
KAYS 3,4.

ANNA FAYE SHOFNER

KAYETTES 4; PEP CLUB 2,3,4; ANNUAL STAFF-ORGANIZATION; TRANSFERRED FROM HUNTSVILLE STATE VOCATIONAL SCHOOL, HUNTSVILLE, ARKANSAS; GIRLS' BASKETBALL 1.

WAYNE WAGERS

CLASS SECRETARY 1; NATIONAL HONOR SOCIETY 3; KAYS 1,2,3,4; KAY SECRETARY 4; PUBLICITY 4; JUNIOR PLAY; ANNUAL STAFF-EDITOR; BAND 1,2,3,4; BAND TREASURER 4; BOYS' GLEE CLUB 4; MIXED CHORUS 4.



LUCILLE THOMPSON

KAYETTES 1,2,4; JUNIOR PLAY; GIRLS' GLEE CLUB 1,4; MIXED CHORUS 4.

BOB WAGGONER

CLASS VICE-PRESIDENT 2; KAYS 1,2,3; BASKETBALL 1,2,3; FOOTBALL 1,2,3; JUNIOR PLAY.



PEGGY WHITE

KAYETTES 1,2,3,4; KAYETTE SECRETARY 4; BAND 3,4; JUNIOR PLAY; PEP CLUB 1,2,3,4; GIRLS' GLEE CLUB 1,2,3,4; MIXED CHORUS 4; GIRLS' ENSEMBLE 2,3,4.



JOE WARD

KAYS 3,4; FOOTBALL 4; BAND 1,2,3,4; BOYS' GLEE CLUB 1,2,3,4; MIXED CHORUS 1,2,3,4; ANNUAL STAFF-BUSINESS MANAGER; TRANSFERRED FROM KINSLEY HIGH SCHOOL, KINSLEY, KANSAS; CLASS SECRETARY 1; TIMBERLINE HONOR SOCIETY 1; DRAMATICS 2,3.

DOLORES WILLIAMSON

KAYETTES 1,2,3,4; GIRLS' GLEE CLUB 3.



HERMAN WARRICK

KAYS 4; BASKETBALL 2,3; FOOTBALL 1,2,3,4; BOYS' GLEE CLUB 4.



VIRGINIA WILLIAMSON

KAYETTES 1,2,3,4; GIRLS' GLEE CLUB 2,3.

BEVERLY WILSON

CHEERLEADER 3; JUNIOR PLAY.

EDITH WOOLS

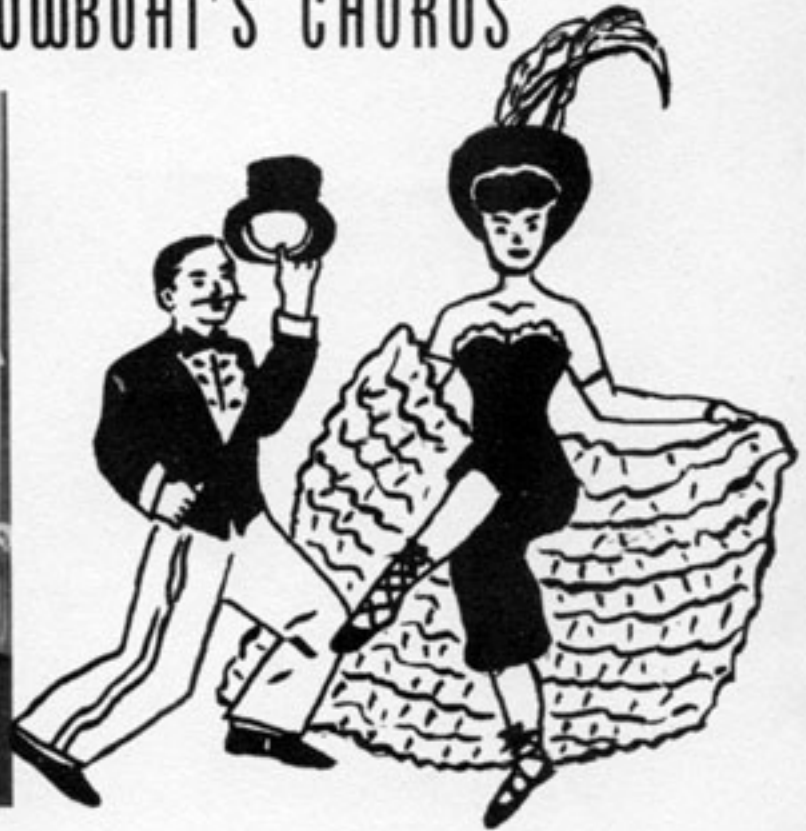
KAYETTES 1,4; ANNUAL STAFF-ASSOCIATE EDITOR AND ASSISTANT ARTIST; PEP CLUB 1,2,3,4; GIRLS' GLEE CLUB 1.



JOAN GUNN

TRANSFERRED FROM OMAHA TECHNICAL HIGH, OMAHA, NEBRASKA; Y-TEENS 1,2; GIRLS' ATHLETIC ASSOCIATION 1,2,4; BAND 1,2; ORCHESTRA 4; PEP CLUB 1,2; MIXED CHORUS 3.

JUNIOR CLASS - THE SHOWBOAT'S CHORUS



JUNIOR CLASS OFFICERS

READING FROM LEFT TO RIGHT:

SAMMIE FARLEY PRESIDENT
 BOB SHORES VICE-PRESIDENT
 DONNA HEWITT TREASURER
 WILMA BUSSELL SECRETARY

FIRST ROW, LEFT TO RIGHT: PAT CAVINEE, PEGGY DAVIDSON, BETTY DINGUS, WILMA BIRCHARD, PEGGY BURCHETT, JEANETTE DEHASTUS, REBA DAVIS, DOROTHY ARMSTRONG, SILVIA COLBERT. SECOND ROW: THURMAN BLEDSOE, MILDRED BURSAB, EARL CASTLEBERRY, MARYANNA DIEHM, JIM DAY, LEROY BUTTS, BERNARD CORTNER, GEORGE BACHMAN, BARBARA DUNAWAY.





FIRST ROW, LEFT TO RIGHT: SHIRLEY GYNN, OLIVE LYONS, CECILE FINNELL, DAISY FLOYD, CLARICE JOHNSON, JUANITA ELKINTON, BERNICE HICKS, MARLENE FINNELL, WANDA HAMM, JOYCE HECKART. SECOND ROW: EUGENE HUNSPERGER, PEGGY DRYDEN, BOB JOHNSON, FRED MATNEY, EVERETT OBERMEIER, DAN HOWARD, WAYNE ICENOGLE, RAY HANEY, JUANITA KOLOSIK, SHIRLEY MILLER.

FIRST ROW, LEFT TO RIGHT: BETTY RAYMER, BERNICE MCKINNEY, JEAN WILLIS, VEDA MCKOON, WANDA MATHERLY, BERNICE SHEROD, CLAUDIENE SEABORN, PEARL MAREZ. SECOND ROW: JOE TROXLER, BONITA STEVENSON, LEON THORNTON, ROGERS SHELL, BILL TROXEL, JIM STRINGHAM, BILL SHULTZ, NAOMI YELTON, JIM WATSON.



SOPHOMORE CLASS - THE UNDERSTUDIES



SOPHOMORE CLASS OFFICERS

READING FROM LEFT TO RIGHT:

LERROY MILLARD	TREASURER
SUSANN THOMPSON	SECRETARY
LESLIE BARRETT	VICE-PRESIDENT
MYRON ROGERS	PRESIDENT

FIRST ROW, LEFT TO RIGHT: KATHLEEN ELLIS, PEGGY CROZIER, DONNA BARDEN, HELEN BUTTS, BETTY ALUMBAUGH, JUANITA BROWN, SHIRLEY CLAWSON, ELAINE DURRANT, KATHLEEN CORTNER, IRENE DURRANT.
 SECOND ROW: KATHERINE DAY, WANDA BLACKBURN, JERRY BALDWIN, RICHARD CASSIDA, ORVILLE BARNES, WESLEY BARTLETT, BOB CREESE, JOHN DOLLAR, BUD BUSSELL, JOHN CASTLEBERRY.





FIRST ROW, LEFT TO RIGHT: RETA HANFELD, IODNA FOUTS, JANICE INSCORE, WILMA JOHNSON, PAT HOPE, NORMA JOHNSON, WILMA GILCHRIST, CHARLOTTE MAYCUMBER. SECOND ROW: EVELYN HANEY, BETTY FEEBECK, JIM HUNSPERGER, BOB FIELDS, ELMER JOHNSON, BUD KELLOGG, RAYMOND FEEBECK, DONNA HAYES, WILMA GRIGSBY. THIRD ROW: HERBERT LAW, LOREN EDWARDS, JAMES BOLEN, GORDON DAVEY, HOWARD GOODEYON, RICHARD HAWK, SANDY JONES.

FIRST ROW, LEFT TO RIGHT: BARBARA TONCRAY, RUTH MILLER, ROSA RICHARDSON, JO ANN RICHARDSON, DORIS SECHREST, DELORES WAGGONER, PAT MORISTON, MARY K. WILLIAMS. SECOND ROW: BENNIE SMITH, LAWRENCE WILLIAMS, VAUGHN MOORE, GERALD McDOWELL, KENNETH RAY, FRANCIS STONE, PAT TENPENNY, JOHN WEAVER, CONNIE THOMS, LEELEN WEIPPERT.



FRESHMAN CLASS - STAGEHANDS



FRESHMAN CLASS OFFICERS

READING FROM LEFT TO RIGHT:

LARRY COKER PRESIDENT
 ROGER GIBSON SECRETARY
 SHIRLEY GOULD VICE-PRESIDENT
 BARBARA CAYLOR TREASURER

FIRST ROW, LEFT TO RIGHT: PAULINE DELA CRUZ, BONNIE COLE, BETTY ADAMS, LORETTA FENOUGHTY, MILDRED GRAVES, DORIS CHANCELLOR, EILEEN FENOUGHTY, ELIZABETH DELA CRUZ. SECOND ROW: SHIRLEY COOK, MARY ANN GOSS, WILLIAM BOONE, JOE BACHMAN, CHARLES BARKER, MARION DEVORE, WAYNE BROOKS, BILL COFFELT, MARYLN AUSTIN, CHARLENE DAVIS. THIRD ROW: ALVIN ARNER, KEITH GOETZ, CHARLES HAYS, ARTHUR DAY, CHARLES CLEARWATER, LOUIS CARTER.





FIRST ROW, LEFT TO RIGHT: CHARLOTTE MOORE, LAVINA LYONS, MARJORIE JOHNS, MARY MCINTOSH, ELEANOR KRAUSE, BILLIE MITCHELL, VERA LANDERS, FRANCES LYNN, JANET LLOYD. SECOND ROW: VIRGIL HOLLOMAN, DONALD MOOR, BILL HURLEY, JAMES HENDERSON, LLOYD OBERHEIER, ROBERT HAIGH, HAZEL MARTIN, RUBY HEWITT, MARJORIE GREGG, PATRICIA HUSTED. THIRD ROW: JERRY KELLY, RICHARD HUTCHENS, CLIFFORD HICKMAN, LOREN KUDER, JIM JORDEN, HOLLIS HUNT, DONNIE HENSON, RICHARD MCGOACH.

FIRST ROW, LEFT TO RIGHT: PEGGY MCKENZIE, BEVERLY QUINCY, ORLA SITTON, NORMA RAYMER, KATHERINE WELLS, MARY JO RICCI, LOIS READ, RUTH WILSON, MARILYN SHOEMAKER. SECOND ROW: DONNA STORM, BOBBY WATSON, BILLY SCHULER, BOB TROXEL, LEO SNYDER, DONALD WARRICK, CARL RUSSELL, LARRY COKER, ROBERT SMITH, ANN MCQUADE. THIRD ROW: JERRY WHETSTONE, FRED WICKE, LAVERNE VAUGHN, ROGER GIBSON, ROBERT PLAISTED, RICHARD PULLIAM, LEONARD O'BRIEN, STANLEY SLATER, EUGENE WEIDE.





"SPECIALTIES"

MOST LIKELY TO SUCCEED:

JIM PARKER AND BETTY CAMPBELL.

MOST ALL-AROUND BOY AND GIRL:

JIM YORK AND ANNA FAYE SHOFNER.

MOST ATHLETIC:

MARIETTA HANEY AND BILL EDDY.

MOST DEPENDABLE:

ANNA LEE PRICE AND RAYMOND BORDEN.

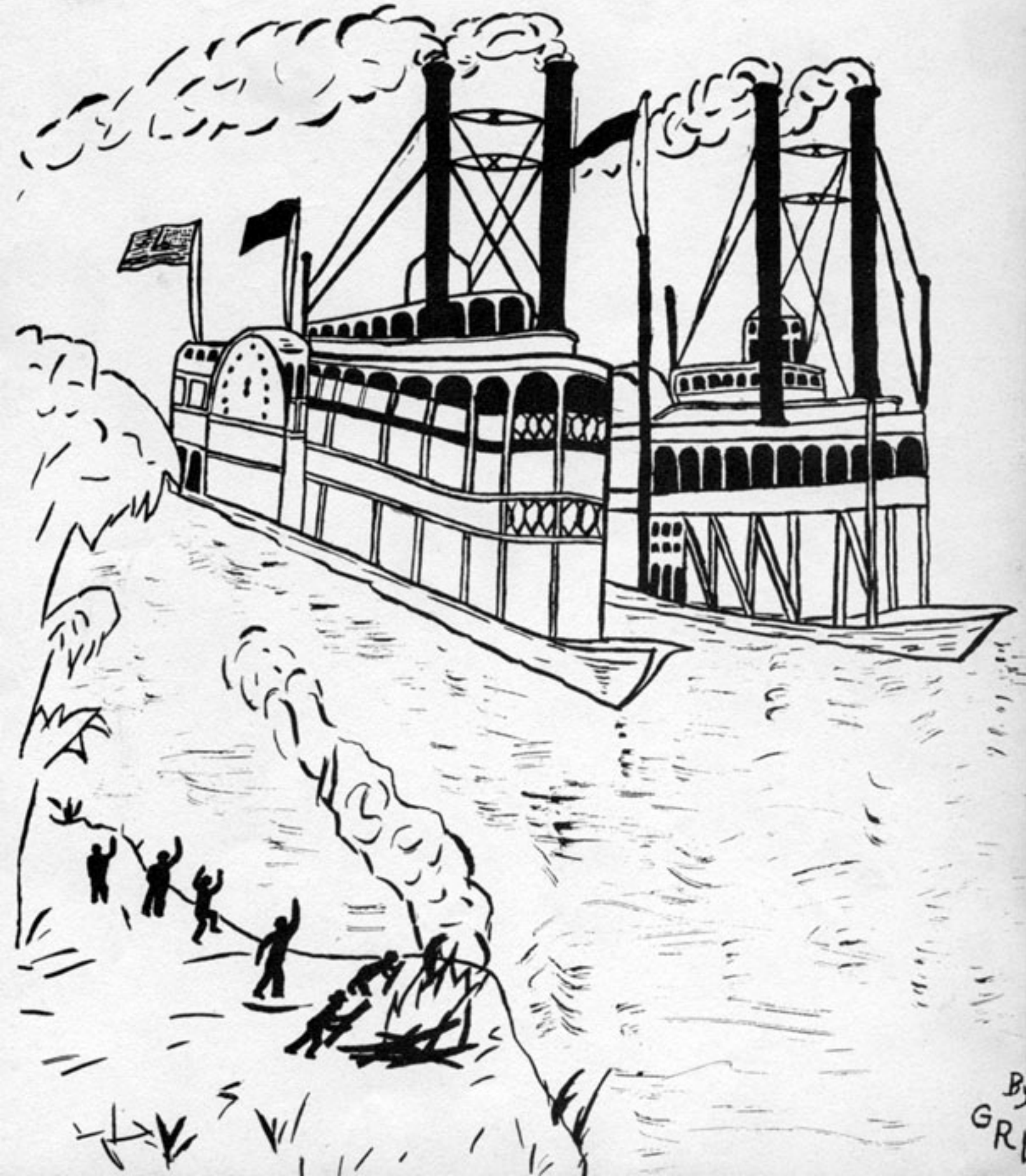
MOST ATTRACTIVE:

GENEVA LYKINS AND CHARLES SCHULER.

MOST STUDIOUS:

RUBY AYRES AND WAYNE WAGERS.





By
GRI



OSAWATOMIE HIGH

Director, R. G. Renoe

Flute

Maryln Austin
 Marilyn Shoemaker
 Joann Johnson
 Marie Ann Haigh
 Carol McClanahan

Alto Clarinet
 Joe Ward

Bass Clarinet
 Bill Coffelt

Oboe
 Shirley Clawson
 Betty Brewer

E-flat Clarinet
 Pat Hope

B-flat Clarinet
 Eleanor Haigh
 Wilma Bussell
 John Dollar
 Rita Faye Cortner
 Peggy Burchett
 Dorothea Clift
 Jerry Whetstone
 Shirley Parker
 Donald McCutcheon
 Bill Boone
 Kathleen Cortner
 Peter Johnson
 Gail D'Arcy
 Byron Harmony
 Juanita Brown

Bassoon
 Jim York
 Alto Saxophone
 Bob Carey
 Ronald McCutcheon
 Jimmie Glenn

Tenor Saxophone
 Rachel Hawk
 (not in picture)
 Peggy White

Baritone Saxophone
 (Not in picture)
 Duane Cook

Bill Hurley, Flag Bearer





SCHOOL BAND

French Horn

Larry Coker
Irene Durrant
Betty Alumbaugh
Elaine Durrant
Jimmie Bolen
Charles Brown

Cornet

Anna Lee Price
Wayne Wagers
Shirley Cook
Jim McCutcheon
Vaughn Moore
Joan Cook
Bill Eddy
Larry Fultz
Eugene Caylor
Don Downen

Baritone

Richard Hawk
Fred Wicke
Silvia Colbert

Trombone

Raymond Borden
Robert Haigh
LaVerne Vaughn
Gene Hayden
Mary Anne Everett

Bass

Bob Cresse
LeRay Millard
Milton McKenzie
Eugene Weide

Drum

Bob Shores
Betty Adams
Delores Waggoner
Gail Winters
Hollis Hunt

Roger Gibson, Flag Bearer





JOANN JOHNSON
MAJORETTE



BAND OFFICERS
LEFT TO RIGHT: BILL EDDY, PRESIDENT; WAYNE WAGERS, SECRETARY; DOROTHEA CLIFT, PUBLICITY DIRECTOR; RAYMOND BORDEN, VICE-PRESIDENT.

SWING BAND

PIANIST, ELEANOR HAIGH; SAXOPHONES, RACHEL HAWK, JOE WARD, BOB CAREY, RONALD McCUTCHEON; CORNETS, ANNA LEE PRICE, WAYNE WAGERS, JIM McCUTCHEON; TROMBONES, RAYMOND BORDEN, ROBERT HAIGH, RICHARD HAWK; BASS CLARINET, JOHN DOLLAR; DRUMS, BOB SHORES; BASS, BOB CRESSE.





DOUBLE OCTET

FRONT ROW, LEFT TO RIGHT: PEGGY WHITE, RITA FAYE CORTNER, ANNA LEE PRICE, WANDA MATHERLY, DORIS SECHREST, ANN MCQUADE, PAT HOPE, PEGGY BURCHETT. BACK ROW, LEFT TO RIGHT: BOB SHORES, JIM YORK (PIANIST), BUD BUSSELL, BILL EDDY, WAYNE ICENOGL, DONALD BEETS, JOE TROXLER, RICHARD HAWK, BOB CAREY.



DOUBLE SEXTET

FRONT ROW, LEFT TO RIGHT: BARBARA DUNAWAY, BETTY ALUMBAUGH, ELEANOR HAIGH, CHARLOTTE MACKUMBER, WANDA MATHERLY, JEANETTE DEMASTUS. BACK ROW, LEFT TO RIGHT: VERA LANDERS, FRANCES LYNN, ANN MCQUADE, BARBARA CAYLOR, JUANITA ELKINTON. NOT IN PICTURE: IRENE WEAVER, PAT HOPE (PIANIST).

GIRLS' SEXTET

LEFT TO RIGHT: ELEANOR HAIGH (PIANIST), RITA FAYE CORTNER, PEGGY BURCHETT, ANNA LEE PRICE, PEGGY WHITE, DORIS SECHREST, PAT HOPE.





GIRLS' GLEE CLUB

SEATED, LEFT TO RIGHT: PEGGY BURCHETT, MARY JO RICCI, BETTY ALUM-
 BAUGH, BARBARA DUNAWAY, JEANETTE DEMASTUS, DORIS CHANCELLOR, LELLEN
 WEPPERT, DONNA STORM, JANET LLOYD, BEVERLY QUINCY, HELEN ORAM,
 MARILYN SHOEMAKER, JOY MCINTOSH, JAUNITA ELKINGTON. SECOND ROW,
 LEFT TO RIGHT: DAISY FLOYD, CHARLENE DAVIS, KAY WELLS, FRANCES
 LYNN, EILEEN FEHOUGHTY, PEGGY WHITE, PATTY HUSTED, MAXINE RAYNER,
 DOROTHY ARMSTRONG, ANN MCQUADE, PEGGY DAVIDSON, MARJORIE JOHNS,
 SHIRLEY GOULD, RUTH WILSON, DORIS SMITH, DELORES WAGGONER. THIRD
 ROW, LEFT TO RIGHT: VERNA LANDERS, RITA FAYE CORTIER, SILVIA COL-
 BERT, ELEANOR HAIGH, ANNA LEE PRICE, PATTY CAVINEE, NORMA JOHNSON,

ELAINE DURRANT, JOAN COOK, BARBARA CAYLOR, MARY ANNE EVERETT,
 SHIRLEY CLAWSON, WANDA MATHERLY, BETTY RAYMER, WANDA BLACKBURN,
 CLAUDENE SEABORN, IRENE DURRANT, JUANITA BROWN, EVELYN HANEY. TOP
 ROW, LEFT TO RIGHT: MARY ANN GOSS, MARYLN AUGSTIN, HELEN BUTTS,
 RUBY HEWITT, HAZEL MARTIN, BERNICE MCKINNEY, CHARLOTTE MAYCUMBER,
 JOANN GUNN, MARYANNA DIEHM, SHIRLEY COOK, DORIS SECUREST, PAT HOPE,
 DONNA HAYES, BETTY DINGUS. NOT IN PICTURE: PEGGY MCKENZIE, LUCILLE
 THOMPSON, CECILE FINNELL, PEARL MAREZ, BARBARA MULLINS, IRENE
 WEAVER.





BOYS' GLEE CLUB

SEATED, LEFT TO RIGHT: GEORGE HAY, ROBERT HAIGH, JIMMY HENDERSON, LOREN EDWARDS, BOB CRESSE, VAUGHN MOORE, HERMAN MARRICK, JOHNNY DOLLAR, RICHARD HAWK, DONALD BEETS, BUD BUSSELL. SECOND ROW, LEFT TO RIGHT: BILL EDDY, LEON THORNTON, BOB SHORES, JOE WARD, GENE HAYDEN, BOB CAREY, KENNETH RAY, WAYNE MAGERS, RAYMOND BORDEN, JOHNNIE BILLAM, WAYNE ICENOGLE, JIM YORK. THIRD ROW, LEFT TO RIGHT: JOE TROXLER, PAT TENPENNY, ALBERT RINGY, CARL CASTLEBERRY, JOHN GOODEN. NOT IN PICTURE: JOE JIMINEZ, BILL SHULTZ, BROOKS PHILLIPS, WESLEY BARTLETT, HERBERT ROBINSON, JERRY WHETSTONE, ROGERS SHELL, DAN HOWARD



BOYS' QUARTET (PIANIST), BOB SHORES, BILL EDDY, RICHARD HAWK, BOB CAREY.

KAYETTE CLUB



BOTTOM: PEGGY WHITE, SECRETARY. LEFT: EVELYN HANEY, TREASURER.

TOP: BETTY CAMPBELL, PRESIDENT. RIGHT: PEGGY BURCHETT, VICE-PRESIDENT.

KAYETTE BOARD OF DIRECTORS



STANDING, LEFT TO RIGHT: JEANETTE DEMASTUS, SCHOOL SERVICE; WILMA BUSSELL, FINANCE; NANCY COWDEN, PARLIAMENTARY LAW; MRS. PECK, SPONSOR; IRENE DURRANT, COMMUNITY SERVICE; WILMA BIRCHARD, PHOTOGRAPHER; JOAN COOK, POINT SYSTEM. SITTING, LEFT TO RIGHT: DOROTHEA CLIFT, RECREATION; ELEANOR HAIGH, MUSICIAN; ANNA LEE PRICE, PROGRAM CHAIRMAN; PAT HOPE, ASSISTANT MUSICIAN; ELAINE DURRANT, PUBLICITY DIRECTOR; RITA FAYE CORTNER, SONG LEADER. NOT IN PICTURE: IRENE WEAVER, RELIGIOUS DIRECTOR.



TOP ROW, LEFT TO RIGHT: MARLENE FINNELL, MARYANNA DIEHM, MARYLN AUSTIN, KATHLEEN CORTNER, SHIRLEY CLAWSON, MARY EVINGER, MARY ANNE EVERETT, JOYCE CARMICHAEL, DORIS BRATTON, BETTY JO CASE, MILDRED BURSAW, PAT CAVINEE. SECOND ROW, LEFT TO RIGHT: BONNIE COLE, MILDRED GRAVES, DORIS CHANCELLOR, SHIRLEY GUYNN, CECILE FINNELL, RETA HANFELD, SHIRLEY COOK, SILVIA COLBERT, MARY ANN GOSS, BARBARA CAYLOR, JUANITA BROWN, KATHLEEN ELLIS, SHIRLEY GOULD, MISS DEANNA McCLURE-SPONSOR. SITTING, LEFT TO RIGHT: PEGGY DAVIDSON, WILMA GILCHRIST, LORETTA FENOUGHTY, BETTY ADAMS, BETTY ALUMBAUGH, HELEN BUTTS, DONNA HAYES, BETTY DINGUS, DONNA BARDEN.

TOP ROW, LEFT TO RIGHT: BEVERLY QUINCY, FRANCES LYNN, JANET LLOYD, DONNA STORM, WANDA MATH-ERLY, SHIRLEY MILLER, JOYCE HECKART, JO NASH, LOIS READ, EDITH WOOLS, ANNA FAYE SHOFNER, GENEVA LYKINS, BEVERLY MAGILL, BARBARA MULLINS, MARILYN SHOEMAKER. SECOND ROW, LEFT TO RIGHT: IDONA FOUTS, MARJORIE JOHNS, VIRGINIA WILLIAMSON, PEGGY MCKENZIE, CLAUDIENE SEABORN, DELORES WILLIAMSON, JUANITA KOLOSIK, DORIS SECREST, PATTY MORISTON, LUCILLE THOMPSON, MARY JO RICCI, ELEANOR KRAUSE, DELORES WAGGONER, SUSANN THOMPSON, NORMA JOHNSON, HAZEL MARTIN, MISS PATRICIA LAMB-SPONSOR. SITTING, LEFT TO RIGHT: VERNA LANDERS, BARBARA TONCRAY, RUTH WILSON, JUDY McINTOSH, BILLIE JEAN MITCHELL, KAY WELLS, ANN McQUADE, CONNIE THOMS, LEELEEN WEIPPERT, OLIVE LYONS.





KAY CLUB



BOTTOM: WAYNE WAGERS, SECRETARY. LEFT: DONALD BEETS, TREASURER.

TOP: BILL EDDY, PRESIDENT. RIGHT: JIM McCUTCHEON, VICE-PRESIDENT.

KAY BOARD OF DIRECTORS

STANDING, LEFT TO RIGHT: SAM FARLEY, RECREATION; LESLIE BARRETT, SCHOOL SERVICE; BOB CAREY, PARLIAMENTARY LAW; RAYMOND BORDEN, PROGRAM; WAYNE WAGERS, PUBLICITY. SITTING, LEFT TO RIGHT: KENNETH RAY, POINT SYSTEM; JIM DAY, RELIGIOUS PROGRAM; MR. BOONE, SPONSOR; DONALD BEETS, FINANCE; MILTON SKEENS, COMMUNITY SERVICE; JIM YORK, MUSICIAN.





TOP ROW, LEFT TO RIGHT: BROOKS PHILLIPS, GEORGE HAY, RAY HANEY, JIM PARKER, RICHARD CASSIDA, RAYMOND FEEBECK, HOWARD GOODEYON. SECOND ROW, LEFT TO RIGHT: ALVIN ARNER, LARRY COKER, ROGER GIBSON, BILL BOONE, JOE WARD, DAN HOWARD, JOHN DOLLAR, RICHARD HAWK, MR. R.M. SIGNOR-SPONSOR. SEATED, LEFT TO RIGHT: DONNIE HENSON, GENE HUNSPERGER, LEWIS CARTER, RICHARD HUTCHENS, KEITH GOETZ, ROBERT HAIGH, ARTHUR DAY, JIMMIE HENDERSON, BILL HURLEY.

TOP ROW, LEFT TO RIGHT: LAVERNE VAUGHN, HOLLIS HUNT, JOE BACHMAN, JOE TROXLER, LLOYD OBERMEIR, BUD KELLOGG, VAUGHN MOORE, JERRY McDOWELL, LEROY MILLARD, BILL COFFELT. SECOND ROW, LEFT TO RIGHT: JERRY WHETSTONE, FREDDIE WICKE, ROGERS SHELL, BILL TROXEL, DON WARRICK, JOHNNIE BILLAM, BOB SHORES, MIKE ROGERS, CHARLES BARKER, EDDIE KELLOGG, FRANCIS STONE, OTIS SNYDER, MR. FRED McCLANAHAN-SPONSOR. SEATED, LEFT TO RIGHT: VIRGIL HOLLOMAN, STANLEY SLATER, BILL SCHULER, RICHARD PULLIAN, BOB SMITH, DONALD MOOR, WAYNE ICENOGLE, BOB WAGGONER, CHARLES SCHULER, HERMAN WARRICK, GEORGE BARNES, LEO SNYDER.





Miss Wanda May Vinson

KAY-KAYETTE DISTRICT CONFERENCE

The Osawatomie Kays and Kayettes entertained approximately two hundred high school students from Southeastern Kansas at the annual Kay and Kayette Conference, December 7 and 8. This was the first conference of its kind ever held in Osawatomie.

The first general session, which was held on the afternoon of December 7 in the high school auditorium, was highlighted by a talk by Miss Wanda May Vinson, state director of Kayettes, on the theme of the conference, "The Time of Your Life". Following the afternoon program and also during the next morning, discussion groups were held.

A Christmas banquet was served on the evening of December 7 at the Masonic Temple. The tables were beautifully decorated with white tapers, cedar, and little white Christmas trees which carried out the theme, "Christmas Bells".

Immediately following, at the general session in the high school auditorium, Mr. Paul B. McCleave, president of the College of Emporia, gave an inspiring and entertaining address. The first day of the conference ended with a party in the gymnasium.

On December 8 following a devotional program, "It is Your Day," the Reverend William Hage of the First Presbyterian Church in Emporia delivered a challenging message. At the recognition service which followed this general session, the Osawatomie Kayettes received their 1,000-point award.

The conference closed with a luncheon at the Presbyterian Church. The tables were gaily decorated with tiny evergreen trees and brightly wrapped packages to carry out the theme, "O Christmas Tree".

At a business meeting following the luncheon, the delegates elected Sam Farley of Osawatomie president of the 1950 Southeastern Conference for Youth.

This ended the conference with all the delegates agreeing that they had had the "time of their lives."

By Mary Anne Everett

SPEAKERS' TABLE AT BANQUET - LEFT TO RIGHT: BETTY CAMPBELL, MRS. MARGUERITE PECK, MR. CARL KOPELK, MR. PAUL MCCLEAVE, BILL EDDY, MISS WANDA MAY VINSON AND MR. GILBERT BOONE.



STANDING: ELAINE DURRANT, SECRETARY; RITA FAYE CORTNER,
 TREASURER. SITTING: WILMA BIRCHARD, PRESIDENT; JO NASH,
 VICE-PRESIDENT.

PEP CLUB

TOP ROW, LEFT TO RIGHT: MARY ANNE EVERETT, DORIS BRATTON, BETTY CAMPBELL, ANNA LEE PRICE, JOAN COOK, LAVINA LYONS,
 DONNA BARDEN, DORIS SECHRIST, SECOND ROW, LEFT TO RIGHT: MARJORIE JOHNS, IRENE DURRANT, SUSANN THOMPSON, SHIRLEY
 GOULD, RITA HANFELD, JUANITA KOLOSIK, MARYLN AUSTIN, SHIRLEY CLAWSON, JUANITA BROWN, NORMA JOHNSON, FRANCES LYNN,
 PEGGY BURCHETT. SITTING, LEFT TO RIGHT: HAZEL MARTIN, BARBARA CAYLOR, BILLIE JEAN MITCHELL, MAXINE RAYNER, PATTY
 MORISTON, OLIVE LYONS, SILVIA COLBERT, JEANETTE DEHASTUS.

TOP ROW, LEFT TO RIGHT: DORIS CHANCELLOR, BEVERLY QUINCY, PAT
 CAVINEE, WANDA MATHERLY, EDITH WOOLS, ANNA FAYE SHOFNER, BETTY JO
 CASE, JOYCE CARMICHAEL. SECOND ROW, LEFT TO RIGHT: BETTY FEEBECK,
 DELORES WAGGONER, PEGGY DAVIDSON, SHIRLEY MILLER, BERNICE SHEROD,
 SHIRLEY GUYNN, CLAUDIENE SEABORN, JEAN WILLIS, MILDRED BURSAR,
 BARBARA DUHAWAY, CLARICE HAYES, HELEN BUTTS, KATHLEEN CORTNER, VERA
 LANDERS, KAY WELLS, DONNA JOHNSON. SITTING, LEFT TO RIGHT: BARBARA
 ANN MCQUADE, CONNIE THOMS, BETTY ALUMBAUGH, CHEERLEADERS: BARBARA
 MULLINS, JOYCE HECKART, PAT HOPE, GENEVA LYKINS, BEVERLY MAGILL.



1



2



3



4



5



6



7



8



10



11

1. Charles Schuler
Co-captain
2. Jim York
3. Bill Eddy
4. Frank Johnson
5. Fred Matney
6. Raymond Borden
7. Leroy Butts
8. Everett Obermeier
9. Eugene O'Brien
10. Mac Steele
Coach
11. Bob Carey



1. James Blackburn
Co-captain
2. Gene Hayden
3. Milton Skeens
4. Joe Troxler
5. Bob Shores
6. Jim McCutcheon
7. Mike Rogers
8. Duane Cook
9. John Billam
10. Bob Signor
Assistant Coach
11. Eddie Kellogg





FOOTBALL SQUAD

TOP ROW, LEFT TO RIGHT: MILTON SKEENS, DUANE COOK, JUNIOR JOHNSON, EVERETT OBERMEIER, BOB CAREY, EDDIE KELLOGG, GENE HAYDEN, MIKE ROGERS, GEORGE BARNES, BOB SHORES. SECOND ROW, LEFT TO RIGHT: RAYMOND BORDEN, BILL EDDY, EUGENE O'BRIEN, ELMER JOHNSON, LEROY BUTTS, JOHNNIE BILLAM, HERMAN WARRICK, JIM McCUTCHEON, JOE TROXLER, SAM FARLEY, JAMES BLACKBURN (CO-CAPTAIN). FIRST ROW, LEFT TO RIGHT: EARL CASTLEBERRY, BOB CRESSE, HOWARD GOODEYON, WESLEY BARTLETT, ROGERS SHELL, WAYNE ICENOGLE, FRED MATNEY, JIM YORK, CHARLES SCHULER (CO-CAPTAIN).

SCORES OF OSAWATOMIE FOOTBALL GAMES

Osawatomie	51	K. S. D.	0
Osawatomie	0	Ottawa	19
Osawatomie	26	Louisburg	0
Osawatomie	0	Olathe	12
Osawatomie	19	Bonner Springs	0
Osawatomie	24	Garnett	27
Osawatomie	7	Washington Rural	14
Osawatomie	6	Turner	6
Osawatomie	13	Paola	6

Season's Record: Won 4; Lost 4; Tied 1.

Matney Scores (Paola)

Skeens Punting (Paola)



CHEERLEADERS



Barbara Mullins



LEFT TO RIGHT: BARBARA MULLINS, JOYCE HECKART, PAT HOPE, GENEVA LYKINS, BEVERLY MAGILL.



Joyce Heckart



Pat Hope



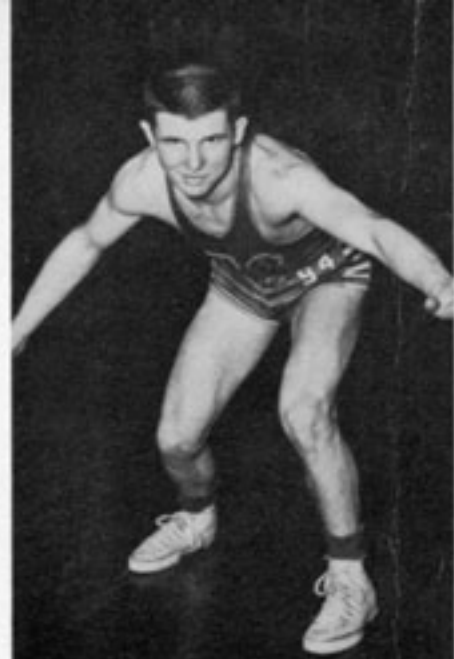
Geneva Lykins



Beverly Magill



FRESHMAN CHEERLEADERS
LEFT TO RIGHT: VERNA LANDERS, CHARLES HAYS,
BARBARA CAYLOR.



SCORES OF FIRST TEAM GAMES:

Osawatomie	34	Quenemo	37
Osawatomie	39	Alumni	32
Osawatomie	42	Louisburg	28
Osawatomie	42	Turner	30
Osawatomie	41	K. S. D.	23
Osawatomie	30	Paola	24
Osawatomie	39	Bonner Springs	23
Osawatomie	26	Olathe	36
Osawatomie	22	Paola	25
Osawatomie	43	Louisburg	39
Osawatomie	33	Bonner Springs	29
Osawatomie	25	K. S. D.	22
Osawatomie	30	Pleasanton	28
	(overtime)		
Osawatomie	32	Pleasanton	28
Osawatomie	23	Olathe	37

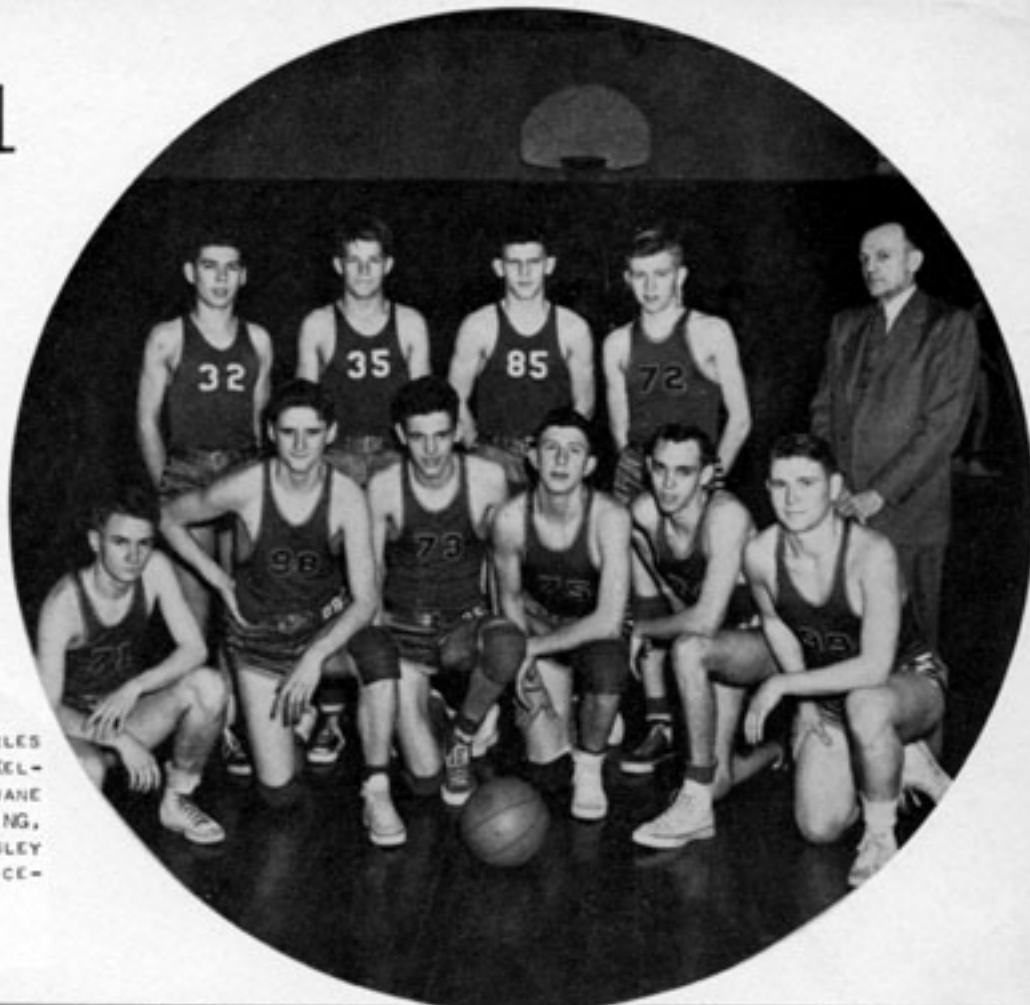
TOP ROW, LEFT TO RIGHT: RAYMOND BORDEN, MILTON SKEENS, BILL EDDY. SECOND ROW: LEROY BUTTS. BOTTOM ROW: BOB SHORES, MYRON ROGERS.

SCORES OF SECOND TEAM GAMES:

Osawatomie	28	Quenemo	23
Osawatomie	22	Alumni	27
Osawatomie	33	Louisburg	21
Osawatomie	26	Turner	38
Osawatomie	38	K. S. D.	19
Osawatomie	28	Paola	35
Osawatomie	34	Bonner Springs	13
Osawatomie	18	Olathe	39
Osawatomie	35	Paola	37
Osawatomie	30	Louisburg	27
Osawatomie	36	Bonner Springs	22
Osawatomie	40	K. S. D.	18
Osawatomie	21	Pleasanton	25
Osawatomie	27	Pleasanton	25
Osawatomie	23	Olathe	48



BASKETBALL SQUADS



SECOND TEAM

SITTING, LEFT TO RIGHT: CHARLES SCHULER, JOHNNIE BILLAM, EDDY KELLOGG, EVERETT OBERMEIER, DUANE COOK, EUGENE O'BRIEN. STANDING, LEFT TO RIGHT: GORDON DAVEY, WESLEY BARTLETT, BOB CRESSE, WAYNE ICENOGLE, S.M. STEELE (COACH).



BASKETBALL SQUAD

SITTING, LEFT TO RIGHT: BILL EDDY, MILTON SKEENS, MYRON ROGERS, BOB SHORES, RAYMOND BORDEN, LEROY BUTTS, CHARLES SCHULER. SECOND ROW, LEFT TO RIGHT: HOWARD GOODEYON, WAYNE ICENOGLE, EUGENE O'BRIEN, EDDY KELLOGG, EVERETT OBERMEIER, JOHNNIE BILLAM, BOB CREESE, DUANE COOK, S.M. STEELE (COACH). LAST ROW, LEFT TO RIGHT: JOHN WEAVER, GORDON DAVEY, LEON THORTON, WESLEY BARTLETT, LESLIE BARRETT, BUO KELLOGG, BILL SHULTZ, VAUGHN MOORE, JOHN DOLLAR, LAWRENCE GOUDIE, RICHARD HAWK, HERBERT LAW.



FRESHMAN FOOTBALL SQUAD

STANDING, LEFT TO RIGHT: CLIFFORD HICKMAN, FRED WICKE, JIM JORDAN, CHARLES CLEARWATER, BENNIE SMITH, ARTHUR DAY, DON MOOR, LLOYD OBERMEIER, RICHARD CASSIDA. SECOND ROW, LEFT TO RIGHT: JOE WARD, LAWRENCE WILLIAMS, BILL COFFELT, LOREN KUDER, CHARLES BARKER, VAUGHN MOORE, MARION DEVORE, LEON THORNTON, LAWRENCE GOUDIE. FRONT ROW, LEFT TO RIGHT: BILL HURLEY, BOBBY WATSON, ROGER GIBSON, ROBERT HAIGH, KEITH GOETZ, JERRY KELLY, GORDON DAVEY, SAM LANDERS (ASSISTANT FRESHMAN COACH). NOT IN PICTURE: ROBERT SIGNOR (FRESHMAN COACH).

SCORES OF FRESHMAN BASKETBALL GAMES:

Osawatomie	31	Turner	26
Osawatomie	20	Olathe	23
Osawatomie	23	Garnett	21
Osawatomie	15	Ottawa	22
Osawatomie	45	Bonner Springs	38
Osawatomie	22	Garnett	35
Osawatomie	13	Olathe	11
Osawatomie	24	Ottawa	38
Osawatomie	32	Rosedale	23
Osawatomie	45	Bonner Springs	40

Won; 6 Lost: 4 Capt.: Larry Coker
Coach; Robert Signor

FRESHMAN BASKETBALL SQUAD

TOP ROW, LEFT TO RIGHT: ROBERT SIGNOR (FRESHMAN COACH), DON WARRICK, JOE BACHMAN, JIM JORDAN, LOREN KUDER, MARION DEVORE (STUDENT MANAGER). SECOND ROW, LEFT TO RIGHT: BILL COFFELT, ROBERT HAIGH, KEITH GOETZ, VIRGIL HOLLOMAN, JERRY WHETSTONE. FRONT ROW, LEFT TO RIGHT: EUGENE WEIDE, DON MOOR, LARRY COKER, FRED WICKE, BILL SCHULER.





"HERE COMES CHARLIE"

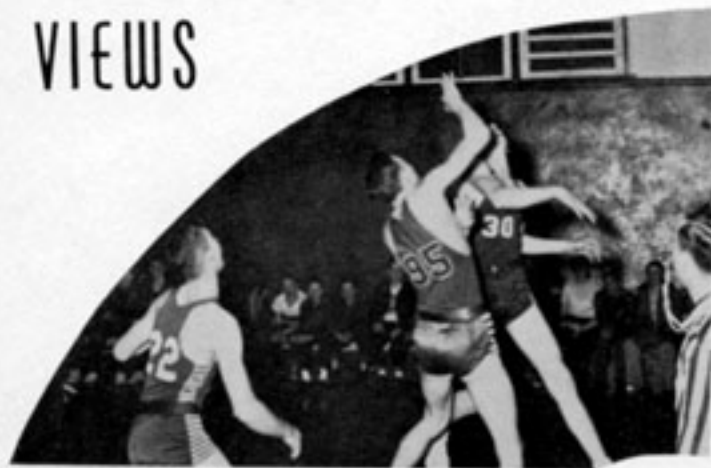


SILVIA COLBERT	NORA MALONE
LEON THORNTON	OFFICER TIM MCGRILL
JEANETTE DEMASTUS	MRS. FANNY FARNHAM
WAYNE ICENOGLE	LARRY ELLIOT
BOB SHORES	TED HARTLEY
JOYCE HECKART	VIVIAN SMYTHE-KERSEY
SAMMY FARLEY	UNCLE ALECK TWIGGS
SHIRLEY MILLER	CHARLIE HOPPS
WANDA MATHERLY	MRS. CAROLINE SMYTHE-KERSEY
JIM DAY	MORTIMER SMYTHE-KERSEY
PEGGY BURCHETT	PROMPTER
LEROY BUTTS	STAGE MANAGER
MR. WILLIAM COFER	DIRECTOR
MR. EDWIN LYON	ASSISTANT DIRECTOR



VIEWS

OF LIFE



Will he make it?
(Pleasanton Game)

This helped!
(Pep Rally)

Don't work too hard!
(Annual Staff)

C'mon, Jim!
(Noon hour recreation)

Did someone play a wrong
note, Mr. Renoe?
(Band)

Is This Study Hall??
(Study Hall)

Oh, my achin' back!
(Boys' Physical Educa-
tion)

What form!
(Girls' Physical Educa-
tion)



ON THE

SHOWBOAT

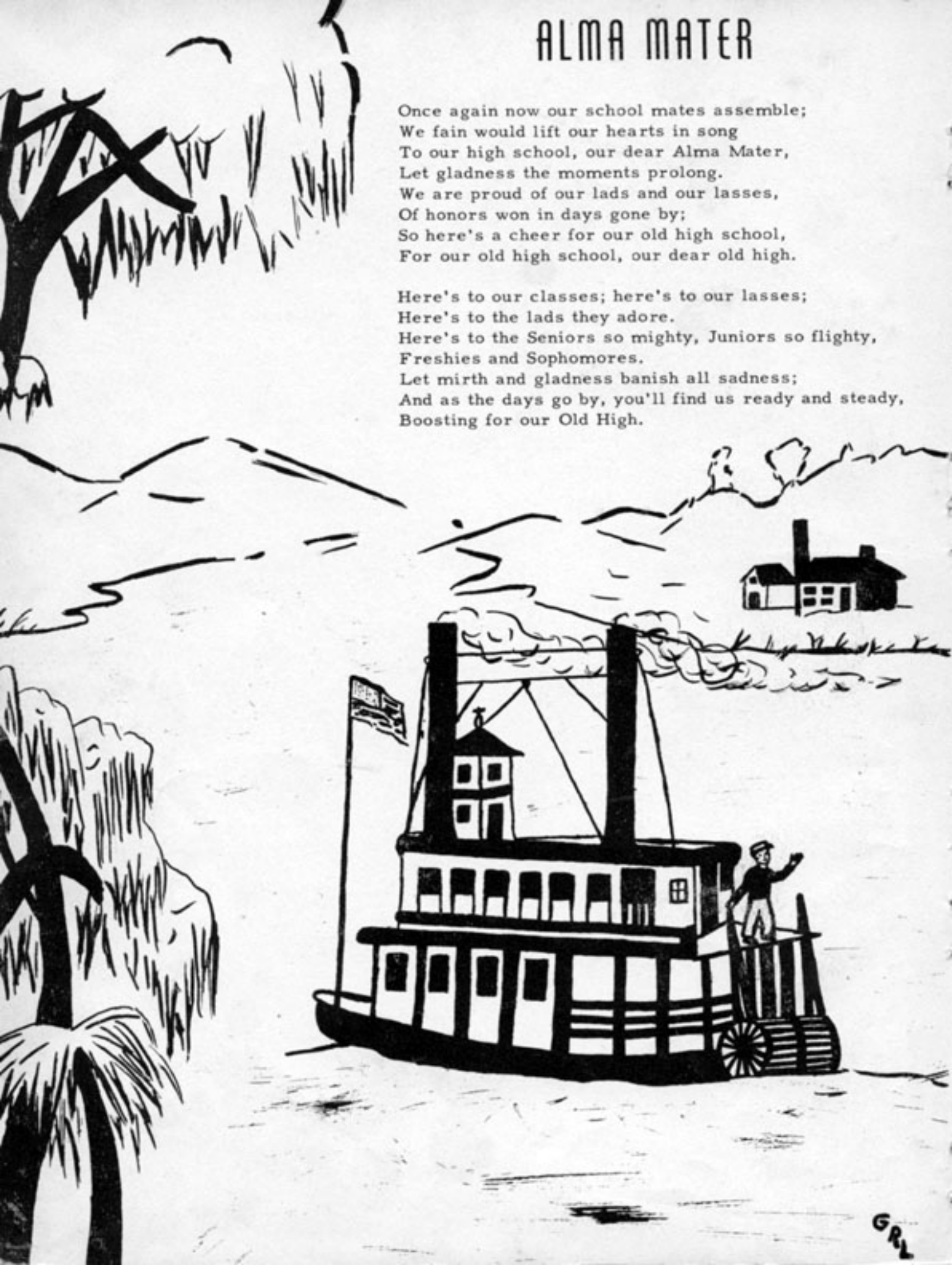


SNAPSHOTS

ALMA MATER

Once again now our school mates assemble;
We fain would lift our hearts in song
To our high school, our dear Alma Mater,
Let gladness the moments prolong.
We are proud of our lads and our lasses,
Of honors won in days gone by;
So here's a cheer for our old high school,
For our old high school, our dear old high.

Here's to our classes; here's to our lasses;
Here's to the lads they adore.
Here's to the Seniors so mighty, Juniors so flighty,
Freshies and Sophomores.
Let mirth and gladness banish all sadness;
And as the days go by, you'll find us ready and steady,
Boosting for our Old High.



GR